

Wiha Werkzeuge GmbH**Obertalstraße 3-7**

78136 Schonach/Germany
 Phone +49 7722 959-0
 Fax +49 7722 959-159 Inland
 Fax +49 7722 959-155 Export
 info.de@wiha.com
 www.wiha.com

Wiha Tools Ltd.

17 The Courtyard
 Buntsford Gate
 Bromsgrove B60 3DJ
 Phone +44 1527 57 57 58
 +44 1527 91 09 86
 Fax +44 1527 91 00 23
 info.uk@wiha.com
 www.wiha.com/en

Wiha France SARL

Z. A. de Terrefort
 33520 Bruges/France
 Phone +33 5 56 16 79 35
 Fax +33 5 56 16 79 36
 servicecommercial@wiha.fr
 www.wiha.com/fr

Wiha Nordic A/S

Korskildelund 6
 2670 Greve/Denmark
 Phone +45 70 23 80 45
 info.nordic@wiha.com
 www.wiha.com

Wiha Iberia Willi Hahn S.A.

Av. del Rey Juan Carlos I, 98. 3°C
 28916 Leganés/Madrid, Spain
 Phone +34 91 693 85 11
 Fax +34 91 693 63 83
 iberia@wiha.com
 www.wiha.com/es

Wiha Polska Sp. z o.o.

ul. Budowlanych 10b
 80-298 Gdańsk/Poland
 Phone +48 58 762 38 30
 Fax +48 58 762 39 00
 info.pl@wiha.com
 www.wiha.com/pl

Wiha in Russia

Phone +48 58 762-38-30
 Fax +48 58 762-39-00
 michal.moczynski@wiha.com
 www.wiha.com

Willi Hahn Corp.

1348, Dundas Circle
 Monticello, MN 55362/USA
 Phone +1 763 2 95 65 91
 Fax +1 763 2 95 65 98
 cservice@wihatools.com
 www.wihatools.com

Wiha Tools Canada Ltd.

394 Deerhurst Drive
 L6T 5H9, Brampton, ON
 Phone +1 866 494 0096
 Fax +1 800 494 7456
 info@wihatools.ca
 www.wihatools.ca

Wiha Asia Pacific Pte. Ltd.

25 International Business Park
 #02-102 German Centre
 Singapore 609916
 Phone +65 6563 1277
 Fax +65 6563 7168
 info.sg@wiha.com
 www.wiha.com

Wiha Tools (Shanghai) Co.Ltd.

Rm14B Zhaofeng
 Universe Building
 1800 Zhongshanxi Road
 Shanghai 200235
 China
 Phone +86 21 6440 1119
 Fax +86 21 6440 1112
 info@wiha.com.cn
 www.wiha.com.cn

Wiha en Belgique

Phone +32 49 35 054 50
 info.belux@wiha.com
 www.wiha.com

Wiha in Nederland

Phone +31 64 63 113 30
 info.nl@wiha.com
 www.wiha.com/nl

Wiha in Italia

Thoelke Rappresentanze Srl
 Phone +39-0332-966039
 info.it@wiha.com
 www.wiha.com/it

Premium Tools Australia Pty Ltd.

PO Box 63
 Bargo, NSW 2574
 Phone +61 02 4664 1460
 Fax +61 02 8088 7272
 sales@wiha.com.au
 www.wiha.com.au

Premium Tools (NZ) Ltd.

Unit 5C 89 Ellice Road
 Wairau Valley
 Auckland, New Zealand
 Phone +64 09 444 2560
 Fax +64 09 355 0411
 sales@wiha.co.nz
 www.wiha.co.nz

Robert Rieffel AG

Widenholzstrasse 8
 8304 Wallisellen/Switzerland
 Phone +41 44 877 33 33
 Fax +41 44 877 33 22
 info@rieffel.ch
 www.rieffel.ch

Technical modifications reserved!
 Art.Nr. 99999487 | 1693-09/2017-4 | Printed in Germany | EN

EN

www.wiha.com

wiha 
 Tools that work for you

EN

Wiha tools for electricians



Wiha tools for electricians

wiha 
 Tools that work for you



Wiha – our goal: your success

- **Your guarantee for quality**
Winner of the Manufacturing Excellence Awards 2014 as the best SME in Germany.
- **Reliable and dependable**
German family-owned company with more than 75 years of experience.
- **Your advantage**
Customised problem-solving for professionals.
- **Cutting-edge technology**
Award-winning innovations valued by professionals throughout the world.

What makes your work easier? Tools that increase your efficiency, reduce costs and preserve your health. This is why Wiha develop, design and manufacture products that meet the highest functionality, durability and ergonomic demands.

Founded over 75 years ago as a small family-owned business for standard parts and screws, Wiha have grown to become a global company with factories all over Europe, Asia and the United States and are still owner-operated by the Hahn family.

Wiha offer the professional a wide range of high-quality premium tools, characterized by their use of the latest manufacturing technologies, application-oriented innovations, ergonomic superiority, top quality, absolute reliability and long service life. In short, tools that make your work noticeably easier - tools that work for you.

VDE-insulated tools from Wiha

To work safer, more efficiently and with less strain on the body.



Certified safety – from our own safety testing procedure according to IEC standards.

Voltage testing: All Wiha VDE-tools, which have special markings, are individually tested at 10,000 V AC and are approved for 1,000 V AC and 1,500 V DC.

Cold shock test: Cooling down to -25° C. The skinning material must retain its toughness, so that it doesn't break when subjected to shock and knocks.

Test of electrical skinning properties: 24 hours storage in water, then 3 minutes test at 10,000 V AC. There must neither be flashover nor disruptive discharge.

Test of the adhesion of the skinning material coating: 168 hours storage at 70° C, then test of adhesion at 500 N.

Pressure tests: Test at 20 N pressure load, 70° C temperature and 5,000 V AC test voltage. No disruptive discharge may occur.

Test of combustion behaviour: The tools are subjected to a flame for 10 seconds. The skinning material must then extinguish and not continue to burn.

Protective measures: See page 113



Ergonomic excellence!

Wiha is the world's first hand tool manufacturer to receive the AGR seal for its Inomic® pliers and ergonomic handle design on screwdrivers. This distinction enjoys broad acceptance by medical professionals

As an internationally recognized institute, the VDE is responsible for the testing and certification of electrotechnical products. Wiha provides the professional with a broad range of VDE products, developed and continuously optimized specifically for electricians, which also provide application oriented solutions for everyday use.

The Wiha quality-management system according to ISO 9001:2015 ensures that only first-class products are manufactured – and that you can work with products of excellent quality. To ensure maximum safety for the user, the entire Wiha VDE range must undergo the most stringent inspections and individual tests. All Wiha VDE-tools hold multiple certifications: The VDE-GS mark stands for safety with regard to any risk, from electrical right up to radiological. Products labelled with a double triangle and a voltage range are suitable for work with live parts.

The international standard IEC 60900 defines the construction, safety as well as single, series, and random testing of insulated tools. But with Wiha you don't just work safer, but also healthier and more efficiently. Specially developed ergonomic geometries ensure comfortable handling that protects the body from strain. The result: easier work, less signs of fatigue, more efficiency.



Competence XXL 2 electrician's tool set
Page 12



Tool set service technician
Page 14



Tool set electrician
Page 18



Tool set electrician
Page 19



Bit set for mounting
Page 20



Tool set insulated
Page 21



L-key set insulated
Page 22



Range of Applications

From page 8

Torque screwdriver TorqueVario®-S electric
Page 28



Screwdriver with bit magazine LiftUp electric
Page 38



Screwdriver SoftFinish® electric slimFix
Page 46



Insulated reversible ratchet
Page 55



Bit Professional 70 mm
Page 58



Screwdriver with bit magazine magnetic
Page 61



L-key set in ErgoStar holder
Page 72



Fastening/ jamming

From page 24

easyTorque torque set electric adapter
Page 31



Screwdriver with bit holder set SoftFinish® electric slimVario®
Page 41



Fine screwdriver PicoFinish electric
Page 52



Bit holder CentroFix Super Slim mechanically lockable
Page 58



Screwdriver with bit magazine LiftUp 25 magnetic
Page 61



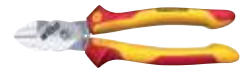
BitBuddy® TY bit set, 29 mm
Page 64



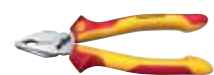
Screw extractor set
Page 73



BiCut® Professional electric high-performance diagonal cutters with DynamicJoint®
Page 78



Combination pliers Professional electric with DynamicJoint® and OptiGrip
Page 79



Diagonal cutters Professional electric with DynamicJoint®
Page 80



Cable cutter Professional electric
Page 80



Precision mechanic's diagonal cutters Classic
Page 81



Electrical shears
Page 81



Trimming/ cutting

From page 74

Combination pliers Professional electric with DynamicJoint® and OptiGrip
Page 85



Water pump pliers Professional electric
Page 85



Water pump pliers Professional electric
Page 85



Needle nose pliers Professional electric
Page 86



Long flat-nose pliers Professional electric
Page 86



Needle nose pliers Professional electric
Page 86



Circclip pliers Classic with MagicTips®
Page 90



Supplying/ holding

From page 82

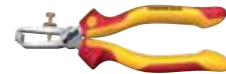
Installation pliers TriCut Professional electric
Page 96



Stripping diagonal cutters Professional electric with DynamicJoint®
Page 96



Stripping pliers Professional electric
Page 96



Needle nose pliers Inomic® VDE
Page 97



Stripping tool
Page 97



Stripping tool automatic
Page 98



Automatic crimp tool
Page 98



Stripping/ insulating/ crimping

From page 92

Flashlight with LED, laser and UV light
Page 104



Torque QuickCheck torque testing device
Page 105



Voltage tester Volt Detector non-contact, single-pole, 230-1,000 V AC
Page 106



Voltage tester SoftFinish® single-pole, 110-250 volts
Page 106



Electrician's Longlife® folding ruler, 2 m
Page 106



Electrician's spirit level
Page 107



Surveying/ marking/ measuring/ checking

From page 100

SoftFinish® dowel racket set with dowels
Page 112



Electrician's hammer
Page 112



Striking/ chiselling

From page 108



Increases your efficiency

A wide range of tools – so the right one is always to hand when you need it.

Protects your health

The patented and multiple award-winning Wiha SoftFinish® handle size concept prevents occupational illnesses as work is kind to hands and muscles. Recommended by German doctors and therapists from the AGR! (Healthy back association)

Offers you full protection

Each tool individually tested at 10,000 V AC and approved for 1,000 V AC.

Increases your safety

Wiha slim tools ensure full and fully-insulated access to low-lying screws.

The range. Cases that really deliver.

The professional often has reservations about conventional tool boxes: too inaccessible, little storage space, not robust enough. Deficiencies that Wiha has taken to heart – and eliminated – in the development of its case sets.

Wiha cases therefore combine many good qualities: Stable inline rollers allow easy and stress-free-transportation of tools. The durable PP-plastic with reinforced plastic elements ensures a long-life-span. Gas-filled shock absorbers hold the cover in all positions and reduce the risk of injury when-closing. Tool trays ensure quick and easy access to the tool, the case itself provides a lot of extra storage space for small items and machines. And, last but not least, you can easily access the right tool, whenever it is needed.

"A case with all major Wiha tools and innovations - like Christmas for the electrician!"

Rolf Muschal



Your entire workshop - now you can take it with you!



Whether next door or at the most remote site: It's great if the tool you need is quickly at hand. Compact, handy and robust, the Wiha toolbox set ensures access to the tools you require, at any time and in any situation. Specially compiled according to varying requirements and applications, the Wiha toolbox sets have one thing in common: All include high-quality tools in proven Wiha quality, guaranteeing easy and efficient working. Ergonomic in design, durable in material and processing, and safe thanks to rigorous and extensive safety test procedures, Wiha tools prove to be a practical and indispensable companion for the electrician, especially in their toolbox set.

- **Increases your efficiency**
A wide range of tools – so the right one is always to hand when you need it.
- **Meets your requirements**
Robuust, groot, duurzaam en veilig met deksel-ithouder
- **Lowers your costs**
The correct torque avoids damaging material and no follow-up work is necessary.
- **Increases your safety**
Each tool individually tested at 10,000 V AC and approved for 1,000 V AC.





Meets your requirements: Case: robust, large, stable and secure with lid brake. **Lowers your costs:** The correct torque protects material from damage and ensures no additional follow-up work. **Protects your health:** Wiha pliers require less force and reduce pressure on wrists. Ergonomic handle design makes work easier and prevents occupational illnesses. Trolley with stable in-line rollers allow easy and stress-free transportation of tools to the work area. **Increases your efficiency:** A comprehensive tool assortment, always providing you with the right tool when it is needed. The design and function of the tool trays guarantee quick and easy access to tools. **Increases your flexibility:** Ample space for additional tools and lots of storage for small parts and machines.

Order-No.

9300-704

42069

1

Fastening/ jamming

- Torque screwdriver set TorqueVario®-S electric (36791)
- 1 x Torque screwdriver TorqueVario®-S electric variably settable torque limit, Tool tested at 10,000 V AC / 1 x Adjusting tool for torque screwdriver with long handle / 1 x slimBit bit holder electric, locked mechanically for VDE torque screwdriver with long handle Screwdriver with bit magazine LiftUp electric 1 x 2,5 / 1 x 3,0 / 1 x 5,5 / 1 x 6,5 / 1 x PH1 / 1 x PH2 / 1 x PZ1 PZ2 / 1 x SL/PZ1 / 1 x SL/PZ2 / 1 x T9 / 1 x T10 / 1 x T15 / 1 x T20 / 1 x T25
- Screwdriver with bit magazine LiftUp electric (41234) 1 x 2,5 / 1 x 3,5 / 1 x 5,5 / 1 x PZ1 PZ2 / 1 x SL/PZ2
- Screwdriver with bit holder SoftFinish® electric slimVario Stubby for slimBits (41229)
- Bit slimBit electric Pozidriv, Tool tested at 10,000 V AC / PZ2 x 75 (34586)
- Screwdriver SoftFinish® electric slimFix Slotted, Tool tested at 10,000 V AC / 3,5 x 100 (35446) / 5,5 x 125 (35391) / 6,5 x 150 (35392)
- Screwdriver SoftFinish® electric slimFix Phillips, Tool tested at 10,000 V AC / PH1 x 80 (35393) / PH2 x 100 (35394)
- Screwdriver SoftFinish® electric slimFix Pozidriv, Tool tested at 10,000 V AC / PZ1 x 80 (35395) / PZ2 x 100 (35396)
- Screwdriver SoftFinish® electric slimFix PlusMinus/Pozidriv, Tool tested at 10,000 V AC / SL/PZ1 x 80 (36329) / SL/PZ2 x 100 (36330)
- Screwdriver SoftFinish® electric slimFix TORX® Tamper Resistant (with hole), Tool tested at 10,000 V AC / T10H x 100 (41141) / T15H x 100 (41142) / T20H x 100 (41143) / T25H x 125 (41144)
- Screwdriver SoftFinish® electric Hex nut driver, Tool tested at 10,000 V AC / 5,5 x 125 (00856) / 7 x 125 (00858) / 8 x 125 (00859) / 10 x 125 (00861) / 13 x 125 (00864)
- Fine screwdriver PicoFinish electric Phillips, Tool tested at 10,000 V AC / PH0 x 60 (38880)
- Fine screwdriver PicoFinish electric Slotted, Tool tested at 10,000 V AC / 2,5 x 60 (38876)
- Switch cabinet key pen shape 1/4" in blister pack 5-8 x 9 (39076)
- Screwdriver SoftFinish® Slotted with one-piece hexagonal blade and solid steel cap 3,5 x 75 (03223) / 12,0 x 200 (03231)
- XLSelector Y bit set, 25 mm (41832)
- PH1 x 25 / PH3 x 25 / PZ1 x 25 / PZ2 x 25 / PZ3 x 25 / T10 x 25 / T15 x 25 / PH2 x 25 / T20 x 25 / T25 x 25 / T30 x 25 / T40 x 25 / Bit holder magnetic, 58 mm 1/4"
- L-key set in ErgoStar holder (41979) 1,5 / 2 / 2,5 / 3 / 4 / 5 / 6 / 8 / 10

Trimming/ cutting

- Professional BiCut® high-performance diagonal cutters with DynamicJoint® switchable, Tool tested at 10,000 V AC / 200 mm, 8" (38191)
- Diagonal cutters Professional electric with DynamicJoint®, Tool tested at 10,000 V AC / 160 mm, 6 1/2" (26741)
- Cable cutter Professional electric, Tool tested at 10,000 V AC / 200 mm, 8" (34744)
- Precision mechanic's diagonal cutters Classic with opening spring 125 mm, 5" (36189)

Supplying/ holding

- Combination pliers Professional electric with DynamicJoint® and OptiGrip with extra long cutting edge, Tool tested at 10,000 V AC / 180 mm, 7" (26708)
- Needle nose pliers Professional electric with cutting edge curved shape, approx. 40°, Tool tested at 10,000 V AC / 200 mm, 8" (26729)
- Needle nose pliers Professional electric with cutting edge straight shape, Tool tested at 10,000 V AC / 200 mm, 8" (26727)
- Water pump pliers Professional electric with push button adjustment, Tool tested at 10,000 V AC / 250 mm, 10" (37450)

Stripping/ insulating/ crimping

- Installation pliers TriCut Professional electric 170 mm, 7" (38552)
- Stripping tool with self-rotating trailing blade 165 mm, 6 1/2" (35969)
- Stripping tool automatic up to 16 mm² in blister pack 32 - 5, 0,03 - 16 mm² (42062)
- Automatic crimp tool for wire-end sleeves hex crimping 210 mm, 0,08-16 mm² (41246)
- Crimp tool for insulated cable eyes and contacts 220mm, 0,5-6 mm² (33841)
- Electrical shears with crimp function in blister pack 160 mm (41923)

Surveying/ marking/ measuring/ checking

- Voltage tester Volt Detector non-contact, single-pole, 230-1,000 VAC (37871)
- Voltage tester SoftFinish® single-pole, 110-250 volts (34745)
- Flashlight with LED, laser and UV light in blister pack, including 3 AAA batteries (41286)
- Electrician's spirit level 40 cm (42074)
- Electrician's Longlife® folding ruler, 2 m metric, 10 segments (42068)
- SoftFinish® dowel racket set with dowels (41289) 1 x PH2

Striking/ chiselling

- Electrician's hammer in blister pack (42071)



Meets your requirements: Case: robust, large, stable and secure with lid brake. **Lowers your costs:** The right tool protects you from damaging materials and avoids subsequent work. **Increases your safety:** Internationally award-winning VDE-insulated tools, each individually tested at 10,000 V AC and approved for use at 1,000 V AC. Gas-filled shock absorbers hold the lid in all positions and reduce the risk of injury when closing. **Protects your health:** Wiha pliers require less force and reduce pressure on wrists. Ergonomic handle design makes work easier and prevents occupational illnesses. Carry belt enables the simple transport of the tool case and keeps hands free for other materials. **Increases your efficiency:** A comprehensive tool assortment, always having the right tool at hand when needed. The design and function of the tool trays guarantee quick and easy access to tools. **Increases your flexibility :** Ample space for additional tools and lots of storage for small parts and machines.

assorted 80-pcs. in case

Order-No.	40523	1
Trimming/ cutting		
✂	Professional BiCut® high-performance diagonal cutters with DynamicJoint® switchable, Tool tested at 10,000 V AC / 200 mm, 8" (38191)	
✂	Diagonal cutters Professional electric with DynamicJoint®, Tool tested at 10,000 V AC / 180 mm, 7" (26744)	
✂	Precision mechanic's diagonal cutters Classic with opening spring 125mm, 5" (36189)	
Stripping/ insulating/ crimping		
✂	Installation pliers TriCut Professional electric 170 mm, 7" (38552)	
	Stripping tool automatic up to 6 mm² in blister pack 190 mm, 7½" (36050)	
	Stripping tool with self-rotating trailing blade 165 mm, 6½" (35969)	
✂	Crimp tool for wire-end sleeves 220 mm, 0,14-10 mm² (33844)	
Supplying/ holding		
	Water pump pliers Professional electric with push button adjustment, Tool tested at 10,000 V AC / 250 mm, 10" (37450)	
✂	Needle nose pliers Professional electric with cutting edge curved shape, approx. 40°, Tool tested at 10,000 V AC / 200 mm, 8" (26729)	
	Combination pliers Professional electric with DynamicJoint® and OptiGrip with extra long cutting edge, Tool tested at 10,000 V AC / 180 mm, 7" (26708)	
✂	Needle nose pliers Professional electric with cutting edge straight shape, Tool tested at 10,000 V AC / 200 mm, 8" (26727)	
Surveying/ marking/ measuring/ checking		
	Voltage tester Volt Detector non-contact, single-pole, 230-1,000 VAC (37871)	
⊖	Voltage tester SoftFinish® single-pole, 110-250 volts (34745)	
	Folding ruler Longlife ² m metric, 10 segments (27057)	
	Switch cabinet spirit level (36859)	
Fastening/ jamming		
○	Screwdriver SoftFinish® electric Hex nut driver, Tool tested at 10,000 V AC / 5,5 x 125 (00856) / 7 x 125 (00858) / 8 x 125 (00859) / 10 x 125 (00861)	
⊖	Screwdriver SoftFinish® electric slimFix Slotted, Tool tested at 10,000 V AC / 3,5 x 100 (35446) / 4,0 x 100 (35390) / 5,5 x 125 (35391) / 6,5 x 150 (35392)	
⊕	Screwdriver SoftFinish® electric slimFix electric PlusMinus/Phillips, Tool tested at 10,000 V AC / SL/PH1 x 80 (35502) / SL/PH2 x 100 (35503)	
⊕	Screwdriver SoftFinish® electric slimFix PlusMinus/Pozidriv, Tool tested at 10,000 V AC / SL/PZ1 x 80 (36329) / SL/PZ2 x 100 (36330)	
⊕	Screwdriver SoftFinish® electric slimFix Phillips, Tool tested at 10,000 V AC / PH1 x 80 (35393) / PH2 x 100 (35394)	
⊕	Screwdriver SoftFinish® electric slimFix Pozidriv, Tool tested at 10,000 V AC / PZ1 x 80 (35395) / PZ2 x 100 (35396)	
⊖	Screwdriver SoftFinish® Slotted with one-piece hexagonal blade and solid steel cap 12,0 x 200 (03231)	
⊖ ⊕ ⊕ ⊕ ⊕	Switch cabinet key cross shape (36114)	
⊖ ⊕ ⊕	Screwdriver with bit magazine LiftUp electric (38611) 1 x 3,0 / 1 x 4,0 / 1 x 5,5 / 1 x PH1 / 1 x PH2 / 1 x SL/PZ2	
●	L-key set in Compact holder (01418) 1,5 / 2 / 2,5 / 3 / 4 / 5 / 6 / 8 / 10	
	Bit set XLSelector Standard 25 mm (29417)	
⊖ ⊕ ⊕ ⊕	1 x 4,5 / 1 x 5,5 / 1 x 6,5 / 2 x PH1 / 4 x PH2 / 1 x PH3 / 2 x PZ1 / 5 x PZ2 / 1 x PZ3 / 2 x T10 / 2 x T15 / 2 x T20 / 3 x T25 / 2 x T30 / 1 x T40 / 1 x Bit holder magnetic, 58 mm 1/4"	

Tool set service technician



Meets your requirements: Carefully selected tool ranges for the most common applications. **Increases your safety:** Wiha slim blades ensure unlimited, protected access to deep-set screws. Internationally award-winning VDE-insulated tools, each individually tested at 10,000 V AC and approved for use at 1,000 V AC. **Increases your efficiency:** Compact and space-saving tool range.

assorted 29-pcs. in bag

9300-030

Order-No.	
37137	1

Trimming/ cutting

Diagonal cutters Professional electric with DynamicJoint®, Tool tested at 10,000 V AC / 160 mm, 6 ½" (26741)

Diagonal cutters Electronic wide, pointed head without bevelled edge 138 mm, 5 ½" (26818)

Stripping/ insulating/ crimping

Stripping tool with self-rotating trailing blade 165 mm, 6½" (35969)

Stripping tool automatic up to 10 mm² in blister pack 190mm, 7½" (33847)

Supplying/ holding

Needle nose pliers Professional electric with cutting edge straight shape, Tool tested at 10,000 V AC / 200 mm, 8" (26727)

Needle nose pliers Electronic narrow, short head straight form 135 mm, 5 ½" (26801)

Surveying/ marking/ measuring/ checking

Voltage tester SoftFinish® single-pole, 110-250 volts (34745)

Fastening/ jamming

Screwdriver SoftFinish® electric slimFix Slotted, Tool tested at 10,000 V AC / 3,5 x 100 (35446) / 5,5 x 125 (35391)

Screwdriver SoftFinish® electric slimFix Phillips, Tool tested at 10,000 V AC / PH1 x 80 (35393) / PH2 x 100 (35394)

Screwdriver SoftFinish® electric slimFix Pozidriv, Tool tested at 10,000 V AC / PZ1 x 80 (35395) / PZ2 x 100 (35396)

Fine screwdriver PicoFinish Slotted 1,5 x 40 (00478) / 2,0 x 40 (00482) / 2,5 x 50 (00486) / 3,0 x 50 (00490)

Fine screwdriver PicoFinish Phillips PH00 x 40 (00512) / PH0 x 50 (00511)

Switch cabinet key cross shape (36114)

L-key set in Compact holder (01418) 1,5 / 2 / 2,5 / 3 / 4 / 5 / 6 / 8 / 10

Tool set electrician



Protects your health: With the patented SoftFinish® handle design, ensuring work is kind to hands and muscles. Recommended by doctors and therapists at German Campaign for Healthier Backs. **Increases your efficiency:** Compact and space-saving tool range. **Offers you full protection:** Each tool individually tested at 10,000 V AC and approved for 1,000 V AC.

screwdriver, diagonal cutters, 6-pcs. in bag

9300-018

Order-No.	
33969	1

Fastening/ jamming

Screwdriver SoftFinish® electric Slotted, Tool tested at 10,000 V AC / 3,5 x 100 (00822) / 4,5 x 125 (00824) / 5,5 x 125 (00826)

Screwdriver SoftFinish® electric Phillips, Tool tested at 10,000 V AC / PH1 x 80 (00847) / PH2 x 100 (00848)

Trimming/ cutting

Diagonal cutters Professional electric with DynamicJoint®, Tool tested at 10,000 V AC / 160 mm, 6 ½" (26741)

Tool set electrician



Increases your efficiency: Compact and space-saving tool range. **Offers you full protection:** Each tool individually tested at 10,000 V AC and approved for 1,000 V AC.

screwdriver, needle nose pliers, diagonal cutters, 5-pcs. in bag

Z 99 0 002 06

Order-No.	
26755	1

Fastening/ jamming

Screwdriver SoftFinish® electric Slotted, Tool tested at 10,000 V AC / 3,5 x 100 (00822) / 5,5 x 125 (00826)

Screwdriver SoftFinish® electric Phillips, Tool tested at 10,000 V AC / PH2 x 100 (00848)

Supplying/ holding

Needle nose pliers Professional electric with cutting edge straight shape, Tool tested at 10,000 V AC / 200 mm, 8" (26727)

Trimming/ cutting

Diagonal cutters Professional electric with DynamicJoint®, Tool tested at 10,000 V AC / 160 mm, 6 ½" (26741)



Meets your requirements: Carefully selected tool ranges for the most common applications. **Increases your safety:** Internationally award-winning VDE-insulated tools, each individually tested at 10,000 V AC and approved for use at 1,000 V AC. **Protects your health:** With the patented SoftFinish® handle design, ensuring work is kind to hands and muscles. Recommended by doctors and therapists at German Campaign for Healthier Backs. **Increases your efficiency:** Compact and space-saving tool range.

assorted 12-pcs. in bag

9300-025

Order-No.	
36389	1

Fastening/ jamming

- ⊖ Screwdriver SoftFinish® electric slimFix Slotted, Tool tested at 10,000 V AC / 3,5 x 100 (35446) / 4,5 x 125 (35501) / 5,5 x 125 (35391)
- ⊕ Screwdriver SoftFinish® electric slimFix Pozidriv, Tool tested at 10,000 V AC / PZ1 x 80 (35395) / PZ2 x 100 (35396)

Surveying/ marking/ measuring/ checking

- ⊖ Voltage tester SoftFinish® single-pole, 110-250 volts (34745)
- ⊖ Folding ruler Longlife ² m metric, 10 segments (27057)

Supplying/ holding

- Needle nose pliers Professional electric with cutting edge straight shape, Tool tested at 10,000 V AC / 200 mm, 8" (26727)

Trimming/ cutting

- ✂ Cable cutter Professional electric, Tool tested at 10,000 V AC / 200 mm, 8" (34744)

Stripping/ insulating/ crimping

- Stripping tool automatic up to 6 mm² in blister pack 190 mm, 7½" (36050)
- Stripping tool with self-rotating trailing blade 165 mm, 6½" (35969)



Increases your safety: Wiha slim blades ensure unlimited, protected access to deep-set screws. **Protects your health:** With the patented SoftFinish® handle design, ensuring work is kind to hands and muscles. Recommended by doctors and therapists at German Campaign for Healthier Backs. **Increases your efficiency:** Compact and space-saving tool range. **Offers you full protection:** Each tool individually tested at 10,000 V AC and approved for 1,000 V AC.

screwdriver, heavy-duty diagonal cutters, 7-pcs. in bag

9300-031

Order-No.	
38020	1

Fastening/ jamming

- ⊖ Screwdriver SoftFinish® electric slimFix Slotted, Tool tested at 10,000 V AC / 3,5 x 100 (35446) / 4,0 x 100 (35390) / 5,5 x 125 (35391)
- ⊕ Screwdriver SoftFinish® electric slimFix Phillips, Tool tested at 10,000 V AC / PH2 x 100 (35394)
- ⊕ Screwdriver SoftFinish® electric slimFix Pozidriv, Tool tested at 10,000 V AC / PZ2 x 100 (35396)
- ⊕ Screwdriver SoftFinish® electric slimFix PlusMinus/Pozidriv, Tool tested at 10,000 V AC / SL/PZ2 x 100 (36330)



Simplifies your work: Free hands and no damage to work trousers thanks to pouch attached to belt. **Increases your safety:** Wiha slim blades ensure unlimited, protected access to deep-set screws. Internationally award-winning VDE-insulated tools, each individually tested at 10,000 V AC and approved for use at 1,000 V AC. **Protects your health:** With the patented SoftFinish® handle design, ensuring work is kind to hands and muscles. Recommended by doctors and therapists at German Campaign for Healthier Backs. **Increases your efficiency:** All main tools quickly accessible, always at hand.

assorted slotted, Phillips, 10-pcs. in belt pouch

9300-012-01

Order-No.	
40948	1

Supplying/ holding

- Needle nose pliers Professional electric with cutting edge straight shape, Tool tested at 10,000 V AC / 200 mm, 8" (26727)

Stripping/ insulating/ crimping

- ✂ Stripping pliers Professional electric 160 mm, 6 ½" (26847)
- Stripping tool with self-rotating trailing blade 165 mm, 6½" (35969)

Fastening/ jamming

- ⊖ Screwdriver SoftFinish® electric slimFix Slotted, Tool tested at 10,000 V AC / 3,5 x 100 (35446) / 4,0 x 100 (35390) / 5,5 x 125 (35391)
- ⊕ Screwdriver SoftFinish® electric slimFix Phillips, Tool tested at 10,000 V AC / PH1 x 80 (35393) / PH2 x 100 (35394)

Surveying/ marking/ measuring/ checking

- ⊖ Voltage tester SoftFinish® single-pole, 110-250 volts (34745)
- Measuring tape 5 m (33251)

Tool set electrician



Simplifies your work: Free hands and no damage to work trousers thanks to pouch attached to belt. **Increases your safety:** Wiha slim blades ensure unlimited, protected access to deep-set screws. Internationally award-winning VDE-insulated tools, each individually tested at 10,000 V AC and approved for use at 1,000 V AC. **Protects your health:** With the patented SoftFinish® handle design, ensuring work is kind to hands and muscles. Recommended by doctors and therapists at German Campaign for Healthier Backs. **Increases your efficiency:** All main tools quickly accessible, always at hand.

assorted slotted, Pozidriv, 10-pcs. in belt pouch 9300-013-02

Order-No.	1
40282	1

Supplying/ holding

- Needle nose pliers Professional electric with cutting edge straight shape, Tool tested at 10,000 V AC / 200 mm, 8" (26727)

Stripping/ insulating/ crimping

- Stripping pliers Professional electric 160 mm, 6 1/2" (26847)
- Stripping tool with self-rotating trailing blade 165 mm, 6 1/2" (35969)

Fastening/ jamming

- Screwdriver SoftFinish® electric slimFix Slotted, Tool tested at 10,000 V AC / 3,5 x 100 (35446) / 4,0 x 100 (35390) / 5,5 x 125 (35391)
- Screwdriver SoftFinish® electric slimFix Pozidriv, Tool tested at 10,000 V AC / PZ1 x 80 (35395) / PZ2 x 100 (35396)

Surveying/ marking/ measuring/ checking

- Voltage tester SoftFinish® single-pole, 110-250 volts (34745)
- Measuring tape 5 m (33251)

Bit set for mounting



Simplifies your work: Utmost accessibility thanks to long, 70 mm bits. Also ideal for machine operation. **Facilitates handling:** Variably adjustable blade length depending on application. **Increases your efficiency:** All common blades in one compact set.

19-pcs. in bag 79187 T04

Order-No.	1
41223	1

- 1 x T15 / 1 x T20 / 1 x T25 / 1 x T30 / 1 x T40
- 1 x PH0 / 1 x PH1 / 1 x PH2
- 1 x SL/PZ1 / 1 x SL/PZ2
- 1 x 3,5 / 1 x 4,0 / 1 x 5,5
- 1 x 4,0 / 1 x 5,0 / 1 x 6,0
- 1 x Bit holder magnetic, 74 mm 1/4"
- 1 x Screwdriver handle SoftFinish®-telescopic for SYSTEM 6 interchangeable blade
- 1 x Bit holder SYSTEM 6 clamping with ball

Ratchet box spanner set insulated



Increases your safety: Double-layered insulation provides immediate feedback on the safety condition of the tool. **Offers you full protection:** Each tool individually tested at 10,000 V AC and approved for 1,000 V AC.

7-pcs. 5589N K7

Order-No.	1
33181	1
8 / 10 / 12 / 13 / 14 / 17 / 19	

Manufactured according to EN/IEC 60900:2012.

Tool set insulated



Increases your safety: Double-layered insulation provides immediate feedback on the safety condition of the tool. **Offers you full protection:** Each tool individually tested at 10,000 V AC and approved for 1,000 V AC.

Reversible ratchet and accessories 1/2" 10-pcs. 7208N K1001

Order-No.	1
33184	1
1/2" / Insulated reversible ratchet	
125 / Insulated extension	
10 / 12 / 13 / 14 / 17 / 19 / 22 / 24	

Manufactured according to EN/IEC 60900:2012.

Tool set insulated



Increases your safety: Double-layered insulation provides immediate feedback on the safety condition of the tool. **Offers you full protection:** Each tool individually tested at 10,000 V AC and approved for 1,000 V AC.

Reversible ratchet and accessories 3/8" 10-pcs. 7207N K1001

Order-No.	
33183	1
3/8" / Insulated reversible ratchet	
125 / Insulated extension	
8 / 10 / 11 / 12 / 13 / 14 / 17 / 19	
Manufactured according to EN/IEC 60900:2012.	

Single open-end spanner set insulated



Increases your safety: Double-layered insulation provides immediate feedback on the safety condition of the tool. **Offers you full protection:** Each tool individually tested at 10,000 V AC and approved for 1,000 V AC.

15-pcs. 5590N T15

Order-No.	
33179	1
○	6 / 7 / 8 / 9 / 10 / 11 / 12 / 13 / 14 / 15 / 16 / 17 / 19 / 22 / 24
DIN 7446. Manufactured according to EN/IEC 60900:2012.	

L-key set insulated



Increases your safety: Double-layered insulation provides immediate feedback on the safety condition of the tool. **Offers you full protection:** Each tool individually tested at 10,000 V AC and approved for 1,000 V AC.

internal hexagon, 7-pcs. in bag 352N S7

Order-No.	
33182	1
●	3 / 4 / 5 / 6 / 8 / 10 / 12
Manufactured according to EN/IEC 60900:2012.	





Increases your efficiency

Wiha screwdrivers offer an optimal balance between power and control thanks to their unique handle size concept.

Saves money

By using the correct torque value, torque tools protect against material damage and reworking.

Protects your health

The patented and multiple award-winning Wiha SoftFinish® handle size concept prevents occupational illnesses as work is kind to hands and muscles. Recommended by German doctors and therapists from the AGR! (Healthy back association)

Offers you full protection

Each tool individually tested at 10,000 V AC and approved for 1,000 V AC.

Increases your safety

Wiha slim tools ensure full and fully-insulated access to low-lying screws.

Fastening/ jamming

We have the know-how at the tip of our fingers.

The ergonomic quality of a tool is never quite so apparent as when fastening and clamping. Under the motto "A grasp on turning" Wiha presents an innovative handle size concept which breaks new ground in terms of individual user comfort. Many commonly available screwdrivers are not designed to meet the needs of users. This results in disadvantages in guiding the tool as well as in transmitting force while fastening. In contrast, the Wiha SoftFinish® concept works with four different handle sizes: Thus, each handle has a perfectly correlated ratio of guidance, speed and torque for any task.

The Wiha slimTECHNOLOGY offers additional comfort, permitting unrestricted access to each screw with 33 % slimmer blades.

"The idea of integrating the insulation in the blade in slimFix is fantastic. For me, this means I can work more efficiently and safely."

Andreas Heizmann



There are moments when you need to control your power.



Power is good. Controlled power is better. The fully certified Wiha VDE torque screwdriver systems TorqueVario®-S and TorqueVario®-S TR combine precision with safety: With a distinctly audible and perceptible click signal when the torque value is reached. With a release accuracy of $\pm 6\%$ of the set scale value, Wiha VDE screwdrivers meet the accuracy requirements of EN ISO 6789, BS EN 26789, ASME B107.14M. Uncompromising safety is ensured in production and testing according to IEC 60900, VDE/GS certification and individual product testing at 10,000 V AC.

- **Increases your efficiency**
Using the correct torque prevents from rework and damaged material.
- **Lowers your costs**
The correct torque protects you from warranty claims.
- **Offers you full protection**
Each tool individually tested at 10,000 V AC and approved for 1,000 V AC.
- **Increases your safety**
Wiha slimBits grant unhindered, fully insulated access to deeplying screws.





Meets your requirements: A variably settable torque which covers a large range of usage. **Simplifies your work:** All tools securely arranged in a robust and clearly laid out bag. **Lowers your costs:** The correct torque protects you from warranty claims. **Increases your safety:** Wiha SlimBits ensure unlimited, protected access to deep-set screws. **Protects your health:** With the patented SoftFinish® handle design, ensuring work is kind to hands and muscles. Recommended by doctors and therapists at German Campaign for Healthier Backs. **Increases your efficiency:** The correct torque avoids damaging material and no follow-up work is necessary. **Offers you full protection:** Each tool individually tested at 10,000 V AC and approved for 1,000 V AC.

assorted, variably adjustable torque limit, 18-pcs. in bag

2872 T18

Order-No.	
36791	1
○	1 x Torque screwdriver TorqueVario®-S electric variably settable torque limit, Tool tested at 10,000 V AC, 0,8 - 5,0 Nm
	1 x Adjusting tool for torque screwdriver with long handle
○	1 x slimBit bit holder electric, locked mechanically for VDE torque screwdriver with long handle
⊖	1 x 2,5 / 1 x 3,0 / 1 x 5,5 / 1 x 6,5
⊕	1 x PH1 / 1 x PH2
⊕	1 x PZ1 / 1 x PZ2
⊕	1 x SL/PZ1 / 1 x SL/PZ2
⊕	1 x T9 / 1 x T10 / 1 x T15 / 1 x T20 / 1 x T25

Manufactured acc. to IEC 60900:2012. DIN EN ISO 6789.



Meets your requirements: A variably settable torque which covers a large range of usage. **Simplifies your work:** All tools securely arranged in a robust and clearly laid out bag. **Lowers your costs:** The correct torque protects you from warranty claims. **Increases your safety:** Wiha SlimBits ensure unlimited, protected access to deep-set screws. **Protects your health:** With the patented SoftFinish® handle design, ensuring work is kind to hands and muscles. Recommended by doctors and therapists at German Campaign for Healthier Backs. **Increases your efficiency:** The correct torque avoids damaging material and no follow-up work is necessary. **Offers you full protection:** Each tool individually tested at 10,000 V AC and approved for 1,000 V AC.

assorted, variably adjustable torque limit, 13-pcs. in bag

2872 T13

Order-No.	
40674	1
○	1 x Torque screwdriver TorqueVario®-S electric variably settable torque limit, Tool tested at 10,000 V AC, 0,8 - 5,0 Nm
	1 x Adjusting tool for torque screwdriver with long handle
○	1 x Screwdriver with bit holder SoftFinish® electric slimVario for slimBits, Tool tested at 10,000 V AC
○	1 x slimBit bit holder electric, locked mechanically for VDE torque screwdriver with long handle
⊖	1 x 2,5 / 1 x 3,5 / 1 x 5,5
⊕	1 x PH1 / 1 x PH2
⊕	1 x PZ1 / 1 x PZ2
⊕	1 x SL/PZ1 / 1 x SL/PZ2

Manufactured acc. to IEC 60900:2012. DIN EN ISO 6789.

Torque screwdriver set TorqueVario®-S electric



Lowers your costs: The correct torque protects you from warranty claims. **Increases your safety:** Wiha SlimBits ensure unlimited, protected access to deep-set screws. **Increases your efficiency:** The correct torque avoids damaging material and no follow-up work is necessary. **Offers you full protection:** Each tool individually tested at 10,000 V AC and approved for 1,000 V AC.

PlusMinus/Pozidriv variably settable torque limit 5-pcs.

2872 S3

Order-No.						
38074	1					
○	1 x Torque screwdriver TorqueVario®-S electric variably settable torque limit, Tool tested at 10,000 V AC, 0,8 - 5,0 Nm					
○	1 x slimBit bit holder electric, locked mechanically for VDE torque screwdriver with long handle					
○	1 x Adjusting tool for torque screwdriver with long handle					
⊕	1 x SL/PZ1 / 1 x SL/PZ2					

EN ISO 6789.

Torque screwdriver TorqueVario®-S electric



Meets your requirements: A variably settable torque which covers a large range of usage. **Lowers your costs:** The correct torque protects you from warranty claims. **Protects your health:** With the patented SoftFinish® handle design, ensuring work is kind to hands and muscles. Recommended by doctors and therapists at German Campaign for Healthier Backs. **Increases your efficiency:** The correct torque avoids damaging material and no follow-up work is necessary. **Offers you full protection:** Each tool individually tested at 10,000 V AC and approved for 1,000 V AC.

○ variably settable torque limit

2872

Order-No.	Nm	±%	○	⊕	⊖	⊞
26625	0,5-2,0	6 %	3,8	131	30	1
26626	0,8-5,0	6 %	3,8	138	36	1
26627	2,0-7,0	6 %	3,8	142	41	1

Manufactured acc. to IEC 60900:2012. DIN EN ISO 6789.

Adjusting tool



for torque screwdriver with long handle

285-900

Order-No.			
26864	146	90	1

easyTorque torque set electric adapter



Lowers your costs: The correct torque protects you from warranty claims. **Increases your efficiency:** The correct torque avoids damaging material and no follow-up work is necessary. 100 % compatible with the Wiha slimBit system. **Offers you full protection:** Each tool individually tested at 10,000 V AC and approved for 1,000 V AC.

with slimVario® holder and SL/PZ slimBits, 4-pcs. in blister pack

29701 080 S4

Order-No.		
41476	1	
Nm	1 x 0,8	
⊕	1 x SL/PZ1 / 1 x SL/PZ2	
	1 x slimVario® holder	

with slimVario® holder and SL/PZ slimBits, 4-pcs. in blister pack

29701 280 S4

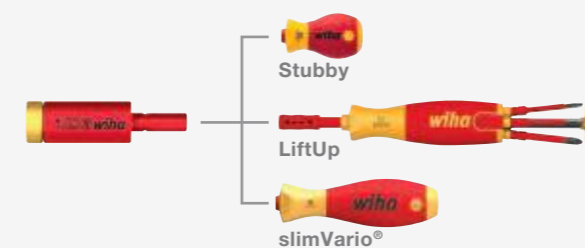
Order-No.		
41478	1	
Nm	1 x 2,8	
⊕	1 x SL/PZ1 / 1 x SL/PZ2	
	1 x slimVario® holder	

with slimVario® holder and SL/PZ slimBits, 4-pcs. in blister pack

29701 200 S4

Order-No.		
41477	1	
Nm	1 x 2,0	
⊕	1 x SL/PZ1 / 1 x SL/PZ2	
	1 x slimVario® holder	

INFOBOX:
easyTorque adapter



easyTorque torque set electric adapter



Lowers your costs: The correct torque protects you from warranty claims. **Increases your efficiency:** The correct torque avoids damaging material and no follow-up work is necessary. 100 % compatible with the Wiha slimBit system. **Offers you full protection:** Each tool individually tested at 10,000 V AC and approved for 1,000 V AC.

for slimBits and slimVario® holder, 5-pcs. in blister pack

29701 S5

Order-No.		
41479	1	
Nm	1 x 0,8 / 1 x 2,0 / 1 x 2,5 / 1 x 2,8 / 1 x 4,0	

easyTorque electric torque adapter



Lowers your costs: Torque tool extension for LiftUp and slimVario® screwdriver sets. The correct torque protects you from warranty claims. **Increases your efficiency:** The correct torque avoids damaging material and no follow-up work is necessary. 100 % compatible with the Wiha slimBit system. **Offers you full protection:** Each tool individually tested at 10,000 V AC and approved for 1,000 V AC.

for slimBits and slimVario® holder in blister

297

Order-No.	Nm	±%	⊕	⊖	⊞
41341	0,8	10 %	59	5,5	1
41342	2,0	10 %	59	5,5	1
41343	2,5	10 %	59	5,5	1
41344	2,8	10 %	59	5,5	1
41345	4,0	10 %	59	5,5	1



Increases your safety:

Checking your torque tool regularly guarantees safe, precise work with the correct torque.

Saves time:

LED traffic light system displays results in a way which is quick and easy to understand.

Increases your efficiency:

Fast, easy checking of your torque tool thanks to mobile, compact shape.

Torque QuickCheck torque testing device



Increases your safety: Checking your torque tool regularly guarantees safe, precise work with the correct torque. **Saves time:** LED traffic light system displays results in a way which is quick and easy to understand. **Increases your efficiency:** Fast, easy checking of your torque tool thanks to mobile, compact shape.

with adapter blades and batteries in box

290

Order-No.	Nm	7/8"	SB	
42086	2,8	2	x	1

**INFOBOX:
Torque QuickCheck**



Wiha Torque QuickCheck

- This device can quickly and easily test torque screwdrivers to check the precision of the configured torque value.
- Checking tools regularly ensures reliable, precise work.
- The device offers user-friendly operation, clear test readings and easy to understand LED traffic light signals.
- Thanks to a compact, handy shape, it is the ideal companion when out on jobs.



Increases your safety: Wiha SlimBits ensure unlimited, protected access to deep-set screws. **Increases your efficiency:** Extensive interchangeable blade system saves you space. **Offers you full protection:** Each tool individually tested at 10,000 V AC and approved for 1,000 V AC.

Slotted 2831-10

Order-No.	⊖	↔	⊖	⊙	max. Nm	📦
34578	2,5•	75	0,4	6,0	0,4	5
34579	3,0•	75	0,5	6,0	0,6	5
41159	3,5	75	0,6	6,0	2,5	5
34580	4,0	75	0,8	6,0	2,5	5
34581	5,5	75	1,0	6,0	5,5	5
34582	6,5	75	1,2	6,0	5,5	5

• no slim version
Manufactured acc. to IEC 60900:2012.

Phillips 2831-11

Order-No.	⊕	↔	⊙	max. Nm	📦
34583	PH1	75	6,0	3,8	5
34584	PH2	75	6,0	5,5	5

Manufactured acc. to IEC 60900:2012.

Pozidriv 2831-12

Order-No.	⊕	↔	⊙	max. Nm	📦
34585	PZ1	75	6,0	3,8	5
34586	PZ2	75	6,0	5,5	5

Manufactured acc. to IEC 60900:2012.

Hex 2831-18

Order-No.	⊙	↔	⊙	max. Nm	📦
37222	1,5•	75	6,0	0,9	5
37223	2•	75	6,0	1,8	5
37224	2,5	75	6,0	3,8	5
37147	3	75	6,0	5,5	5
37225	4	75	6,0	5,5	5
37226	5	75	6,0	5,5	5
37227	6	75	6,0	5,5	5

• no slim version
Manufactured acc. to IEC 60900:2012.

TORX® 2831-15

Order-No.	⊕	↔	⊙	max. Nm	📦
35506	T8•	75	6,0	1,3	5
41160	T9•	75	6,0	1,3	5
35507	T10•	75	6,0	3,8	5
35508	T15	75	6,0	5,0	5
35509	T20	75	6,0	5,5	5
36071	T25	75	6,0	5,5	5

• no slim version
Manufactured acc. to IEC 60900:2012.

PlusMinus/Pozidriv 2831-14

Order-No.	⊕	↔	⊙	max. Nm	📦
34589	SL/PZ1	75	6,0	3,8	5
34590	SL/PZ2	75	6,0	5,5	5

Manufactured acc. to IEC 60900:2012.

Square 2831-17

Order-No.	⊙	↔	⊙	max. Nm	📦	
35510	#1	2,3	75	6,0	5,5	5
35511	#2	2,8	75	6,0	5,5	5

Manufactured acc. to IEC 60900:2012.



Increases your safety: Wiha slimBits ensure unrestricted and fully insulated access to low-lying screws. **Increases your efficiency:** Extensive interchangeable blade system saves you space. **Offers you full protection:** Each tool individually tested at 10,000 V AC and approved for 1,000 V AC.



○ for VDE torque screwdriver with long handle

Order-No.	⊙	⊙	↔	⊙	📦
35870	6	3,8	170	13	10

Manufactured acc. to IEC 60900:2012.

Slotted, Phillips, 6-pcs. in box 2831 B601

Order-No.	📦
36088	1
⊖	1 x 2,5 / 1 x 3,5 / 1 x 4,0 / 1 x 5,5
⊕	1 x PH1 / 1 x PH2

Manufactured acc. to IEC 60900:2012.

Slotted, Pozidriv, 6-pcs. in box 2831 B602

Order-No.	📦
36089	1
⊖	1 x 2,5 / 1 x 3,5 / 1 x 4,0 / 1 x 5,5
⊕	1 x PZ1 / 1 x PZ2

Manufactured acc. to IEC 60900:2012.

Slotted, PlusMinus/Pozidriv, 6-pcs. in box 2831 B603

Order-No.	📦
36090	1
⊖	1 x 2,5 / 1 x 3,5 / 1 x 4,0 / 1 x 5,5
⊕	1 x SL/PZ1 / 1 x SL/PZ2

Manufactured acc. to IEC 60900:2012.

Hex, 7-pcs. in box 2831 B701

Order-No.	📦
38997	1
⊙	1 x 1,5 / 1 x 2 / 1 x 2,5 / 1 x 3 / 1 x 4 / 1 x 5 / 1 x 6

Manufactured acc. to IEC 60900:2012.

All bits in the handle, always and everywhere.



Why make things complicated, when they can be compact? The practical Wiha LiftUp electric magazine bit holder accommodates up to six common insulated slimBits - and is therefore the ideal portable companion for every electrician. The bit magazine is unlocked at the touch of a button on the two rockers, and the slimBits can easily be removed and re-inserted. A reliably locked magazine prevents anything from being lost when on the move. The rotating cap is used to make working easier: Additional axial force can be exerted by pressing strongly with the hand against the cap, while rotating around the longitudinal axis with the other hand. Uncompromising safety is ensured in production and testing according to IEC 60900, VDE/GS certification and individual part testing at 10,000 V AC.

- **Increases your efficiency**
Wiha LiftUp electric, saves 75 % volume and 50 % less weight for 100 % efficiency.
- **Protects your health**
No risk of injury, all blades stowed safely inside the handle.
- **Offers you full protection**
Each tool individually tested at 10,000 V AC and approved for 1,000 V AC.
- **Increases your safety**
Wiha slimBits grant unhindered, fully insulated access to deep lying screws.

The Wiha magazine bit holder LiftUp electric is available in two content variants (TORX® or assorted)





Increases your safety: Wiha SlimBits ensure unlimited, protected access to deep-set screws. **Protects your health:** No risk of injury, all blades stowed safely inside the handle. **Increases your efficiency:** Wiha LiftUp electric, saves 75% volume and 50% less weight for 100 % efficiency. **Offers you full protection:** Each tool individually tested at 10,000 V AC and approved for 1,000 V AC.

TORX® with 6 slimBits

2831 09 022

Order-No.	
41157	5
1 x T8 / 1 x T9 / 1 x T10 / 1 x T15 / 1 x T20 / 1 x T25	
Manufactured acc. to IEC 60900:2012.	

Pozidriv, PlusMinus/Pozidriv, slotted with 6 slimBits

2831 09 023

Order-No.	
41234	5
1 x 2,5 / 1 x 3,5 / 1 x 5,5	
1 x PZ1 / 1 x PZ2	
1 x SL/PZ2	
Manufactured acc. to IEC 60900:2012.	



Simplifies your work: All tools securely arranged in a robust and clearly laid out bag. **Increases your safety:** Wiha SlimBits ensure unlimited, protected access to deep-set screws. **Increases your efficiency:** Extensive interchangeable blade system saves you space. **Offers you full protection:** Each tool individually tested at 10,000 V AC and approved for 1,000 V AC.

assorted 18-pcs. in bag

2831 T18

Order-No.		2831 T18
41231	1	
1 x Screwdriver with bit holder SoftFinish® electric slimVario Stubby for slimBits		
1 x Screwdriver with bit holder SoftFinish® electric slimVario for slimBits, Tool tested at 10,000 V AC		
1 x 2,5 / 1 x 3,5 / 1 x 5,5		
1 x PH1 / 1 x PH2		
1 x PZ1 / 1 x PZ2		
1 x SL/PZ1 / 1 x SL/PZ2		
1 x T9 / 1 x T10 / 1 x T15 / 1 x T20		
1 x 3 / 1 x 4 / 1 x 5		
Manufactured acc. to IEC 60900:2012.		

Screwdriver and bit set slimVario® screwdriver



Simplifies your work: All tools securely arranged in a robust and clearly laid out bag. **Increases your safety:** Wiha SlimBits ensure unlimited, protected access to deep-set screws. **Increases your efficiency:** Extensive interchangeable blade system saves you space. **Offers you full protection:** Each tool individually tested at 10,000 V AC and approved for 1,000 V AC.

Slotted, Phillips, Pozidriv, 9-pcs. in bag

2831 T9 01

Order-No.	
41232	1
	1 x Screwdriver with bit holder SoftFinish® electric slimVario Stubby for slimBits
	1 x Screwdriver with bit holder SoftFinish® electric slimVario for slimBits
	1 x 2,5 / 1 x 3,5 / 1 x 5,5
	1 x PH1 / 1 x PH2
	1 x PZ1 / 1 x PZ2

Manufactured acc. to IEC 60900:2012.

Slotted, Pozidriv, PlusMinus/Pozidriv, 9-pcs. in bag

2831 T9 02

Order-No.	
41233	1
	1 x Screwdriver with bit holder SoftFinish® electric slimVario Stubby for slimBits
	1 x Screwdriver with bit holder SoftFinish® electric slimVario for slimBits
	1 x 2,5 / 1 x 3,5 / 1 x 5,5
	1 x PZ1 / 1 x PZ2
	1 x SL/PZ1 / 1 x SL/PZ2

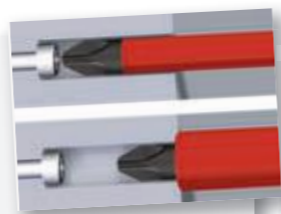
Manufactured acc. to IEC 60900:2012.

INFOBOX:
slimTECHNOLOGY



Wiha SoftFinish® electric slimFix

- Unlimited access.
- Blades up to 33 % narrower due to integrated insulation.
- Tool for spring clips (wedge-profiled output geometry).



Screwdriver with bit holder SoftFinish® electric slimVario



Increases your safety: Wiha slim blades ensure unlimited, protected access to deep-set screws. **Protects your health:** With the patented SoftFinish® handle design, ensuring work is kind to hands and muscles. Recommended by doctors and therapists at German Campaign for Healthier Backs. **Increases your efficiency:** The unique Wiha handle size concept with optimal balance between power and control. **Offers you full protection:** Each tool individually tested at 10,000 V AC and approved for 1,000 V AC.

for slimBits

283100

Order-No.						
34577	6	30	50	160	13	5

Manufactured acc. to IEC 60900:2012.

Screwdriver with bit holder SoftFinish® electric slimVario Stubby for slimBits



Simplifies your work: Compact handle – maximum power. **Increases your safety:** Wiha SlimBits ensure unlimited, protected access to deep-set screws. Protected work in constricted spaces. **Increases your efficiency:** 100 % compatible with the Wiha slimBit system. **Offers you full protection:** Each tool individually tested at 10,000 V AC and approved for 1,000 V AC.

Stubby, 4-pcs.

SB 2831 0101

Order-No.	
41230	1
	Screwdriver with bit holder SoftFinish® electric slimVario Stubby for slimBits
	1x 3,5
	1x PH2
	1x SL/PZ2

Manufactured acc. to IEC 60900:2012.

slimBits



Increases your safety: Wiha SlimBits ensure unlimited, protected access to deep-set screws. **Increases your efficiency:** Extensive interchangeable blade system saves you space. **Offers you full protection:** Each tool individually tested at 10,000 V AC and approved for 1,000 V AC.

Slotted

Order-No.	⊖	↔	⊖	⊙	max. Nm	📦
34578	2,5•	75	0,4	6,0	0,4	5
34579	3,0•	75	0,5	6,0	0,6	5
41159	3,5	75	0,6	6,0	2,5	5
34580	4,0	75	0,8	6,0	2,5	5
34581	5,5	75	1,0	6,0	5,5	5
34582	6,5	75	1,2	6,0	5,5	5

• no slim version
Manufactured acc. to IEC 60900:2012.

Phillips

Order-No.	⊕	↔	⊙	max. Nm	📦
34583	PH1	75	6,0	3,8	5
34584	PH2	75	6,0	5,5	5

Manufactured acc. to IEC 60900:2012.

Pozidriv

Order-No.	⊕	↔	⊙	max. Nm	📦
34585	PZ1	75	6,0	3,8	5
34586	PZ2	75	6,0	5,5	5

Manufactured acc. to IEC 60900:2012.

Hex

Order-No.	⊙	↔	⊙	max. Nm	📦
37222	1,5•	75	6,0	0,9	5
37223	2•	75	6,0	1,8	5
37224	2,5	75	6,0	3,8	5
37147	3	75	6,0	5,5	5
37225	4	75	6,0	5,5	5
37226	5	75	6,0	5,5	5
37227	6	75	6,0	5,5	5

• no slim version
Manufactured acc. to IEC 60900:2012.

PlusMinus/Pozidriv

Order-No.	⊕	↔	⊙	max. Nm	📦
34589	SL/PZ1	75	6,0	3,8	5
34590	SL/PZ2	75	6,0	5,5	5

Manufactured acc. to IEC 60900:2012.

TORX®

Order-No.	⊕	↔	⊙	max. Nm	📦
35506	T8•	75	6,0	1,3	5
41160	T9•	75	6,0	1,3	5
35507	T10•	75	6,0	3,8	5
35508	T15	75	6,0	5,0	5
35509	T20	75	6,0	5,5	5
36071	T25	75	6,0	5,5	5

• no slim version
Manufactured acc. to IEC 60900:2012.

Square

Order-No.	⊖	↔	⊙	max. Nm	📦	
35510	#1	2,3	75	6,0	5,5	5
35511	#2	2,8	75	6,0	5,5	5

Manufactured acc. to IEC 60900:2012.

Bit set slimBit electric



Increases your safety: Wiha slimBits ensure unrestricted and fully insulated access to low-lying screws. **Increases your efficiency:** Extensive interchangeable blade system saves you space. **Offers you full protection:** Each tool individually tested at 10,000 V AC and approved for 1,000 V AC.

Slotted, Phillips, 6-pcs. in box

Order-No.	📦
36088	1
⊖	1 x 2,5 / 1 x 3,5 / 1 x 4,0 / 1 x 5,5
⊕	1 x PH1 / 1 x PH2

Manufactured acc. to IEC 60900:2012.

Slotted, Pozidriv, 6-pcs. in box

Order-No.	📦
36089	1
⊖	1 x 2,5 / 1 x 3,5 / 1 x 4,0 / 1 x 5,5
⊕	1 x PZ1 / 1 x PZ2

Manufactured acc. to IEC 60900:2012.

Slotted, PlusMinus/Pozidriv, 6-pcs. in box

Order-No.	📦
36090	1
⊖	1 x 2,5 / 1 x 3,5 / 1 x 4,0 / 1 x 5,5
⊕	1 x SL/PZ1 / 1 x SL/PZ2

Manufactured acc. to IEC 60900:2012.

Hex, 7-pcs. in box

Order-No.	📦
38997	1
⊙	1 x 1,5 / 1 x 2 / 1 x 2,5 / 1 x 3 / 1 x 4 / 1 x 5 / 1 x 6

Manufactured acc. to IEC 60900:2012.

INFOBOX:
Interchangeable bit system



easyTorque adapter



Stubby electric



slimVario®



VDE interchangeable bit system



slim Torque



Compact VDE bit sets: holder + slimBit (length 75 mm)

- 35 % lighter than comparable sets
- Maximum service life: metal locking mechanism
- Precise work – additional guidance with free-running sleeve
- Controlled tightening of electrical screw connections with slimBits

Can be used with these slimBits



VDE torque system

- Controlled tightening of electrical screw connections with slimBits

Easier and protected access to deep-set screws.



Wiha slimTECHNOLOGY enables blades to be up to 33 % slimmer due to the integrated insulation in the blade. Low-lying screw and spring elements in the critical working area can therefore be reached easily. The high-quality blade insulation guarantees safe work in on live parts up to 1,000 V AC/1,500 V DC. Additional safety is assured as each individual screwdriver is tested in a water bath at 10,000 V AC in accordance with IEC 60900. Roll-off protection, the patented, SoftFinish® handle design that protects the hands and muscles from strain, and the unique handle-length concept for optimal balance between power and control all ensure healthier and more efficient work.

The system for every electrician. Available as a screwdriver or as an interchangeable bit system

- **Increases your efficiency**

The unique Wiha handle size concept with optimal balance between power and control.

- **Protects your health**

With the patented SoftFinish® handle design, ensuring work is kind to hands and muscles. Recommended by doctors and therapists at German Campaign for Healthier Backs.

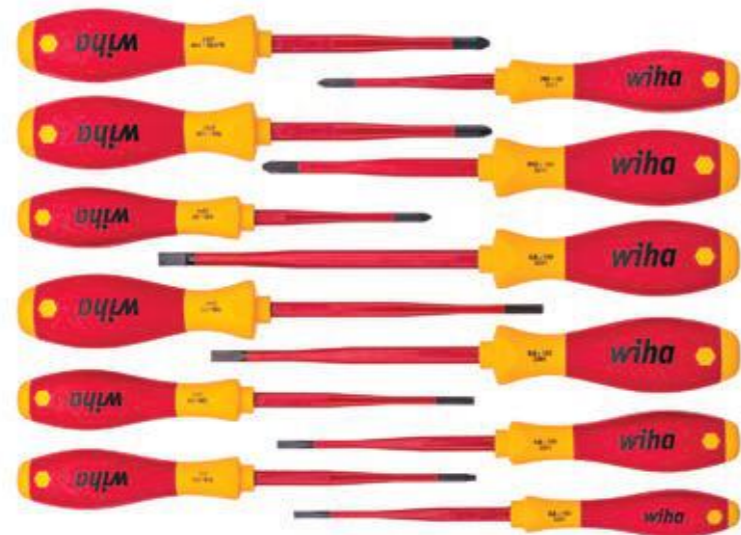
- **Offers you full protection**

Each tool individually tested at 10,000 V AC and approved for 1,000 V AC.

- **Increases your safety**

Wiha slim blades grant unhindered, fully insulated access to low lying screws.





Increases your safety: Wiha slim blades ensure unlimited, protected access to deep-set screws. **Protects your health:** With the patented SoftFinish® handle design, ensuring work is kind to hands and muscles. Recommended by doctors and therapists at German Campaign for Healthier Backs. **Increases your efficiency:** The unique Wiha handle size concept with optimal balance between power and control. **Offers you full protection:** Each tool individually tested at 10,000 V AC and approved for 1,000 V AC.

assorted 12-pcs.

3201 K12

Order-No.		
41003		1
⊖	3,5 x 100 / 4,0 x 100 / 5,5 x 125 / 6,5 x 150	
⊕	PH1 x 80 / PH2 x 100	
⊕	PZ1 x 80 / PZ2 x 100	
⊕	SL/PZ2 x 100	
⊕	T15 x 100 / T20 x 100 / T25 x 125	

INFOBOX: Handle size concept



Wiha SoftFinish® handle sizes

- Every Wiha handle optimally balances guidance, speed and torque for the respective fastening task.
- Quick-turning - Motor skills are consistently taken into consideration.
- Maximum power transmission: comfortable and loss-free transmission of physical strength, even during intensive fastening.
- The power-turning and quick-turning zones (length) vary significantly over the four handle sizes in various forms.
- The Wiha SoftFinish screwdrivers enable work that is kind on the hands and muscles and is therefore recommended by doctors and therapists from the AGR.



Increases your safety: Wiha slim blades ensure unlimited, protected access to deep-set screws. **Protects your health:** With the patented SoftFinish® handle design, ensuring work is kind to hands and muscles. Recommended by doctors and therapists at German Campaign for Healthier Backs. **Increases your efficiency:** The unique Wiha handle size concept with optimal balance between power and control. **Offers you full protection:** Each tool individually tested at 10,000 V AC and approved for 1,000 V AC.

Slotted, Phillips 6-pcs.

3201 K6

Order-No.		
35389		1
⊖	3,5 x 100 / 4,0 x 100 / 5,5 x 125 / 6,5 x 150	
⊕	PH1 x 80 / PH2 x 100	
Manufactured acc. to IEC 60900:2012.		

Slotted, Pozidriv 6-pcs.

3201 ZK6

Order-No.		
36455		1
⊖	3,5 x 100 / 4,0 x 100 / 5,5 x 125 / 6,5 x 150	
⊕	PZ1 x 80 / PZ2 x 100	
Manufactured acc. to IEC 60900:2012.		

Slotted, Phillips, PlusMinus/Pozidriv 6-pcs.

3201 K601

Order-No.		
38362		1
⊖	3,5 x 100 / 4,0 x 100 / 5,5 x 125	
⊕	PH1 x 80 / PH2 x 100	
⊕	SL/PZ2 x 100	
Manufactured acc. to IEC 60900:2012.		

TORX® 6-pcs.

3251 K6

Order-No.		
36558		1
⊕	T8 x 60 / T9 x 60	
⊕	T10 x 100 / T15 x 100 / T20 x 100 / T25 x 125	
• no slim version Manufactured acc. to IEC 60900:2012.		

Screwdriver SoftFinish® electric slimFix



Increases your safety: Wiha slim blades ensure unlimited, protected access to deep-set screws. **Protects your health:** With the patented SoftFinish® handle design, ensuring work is kind to hands and muscles. Recommended by doctors and therapists at German Campaign for Healthier Backs. **Increases your efficiency:** The unique Wiha handle size concept with optimal balance between power and control. **Offers you full protection:** Each tool individually tested at 10,000 V AC and approved for 1,000 V AC.

Slotted 3201

Order-No.	⊖	➤	⊖	➤	➤	➤
35446	3,5	100	0,6	204	23	10
35390	4,0	100	0,8	211	30	10
35501	4,5	125	1,0	236	30	10
35391	5,5	125	1,0	243	36	10
35392	6,5	150	1,2	268	36	10

DIN ISO 2380. Manufactured acc. to IEC 60900:2012.

Phillips 3211

Order-No.	⊕	➤	➤	➤	➤	➤
35393	PH1	80	191	30		10
35394	PH2	100	218	36		10

DIN ISO 8764-PH. Manufactured acc. to IEC 60900:2012.

Pozidriv 3241

Order-No.	⊕	➤	➤	➤	➤	➤
35395	PZ1	80	191	30		10
35396	PZ2	100	218	36		10

DIN ISO 8764-PZ. Manufactured acc. to IEC 60900:2012.

PlusMinus/Pozidriv 3281

Order-No.	⊕	➤	➤	➤	➤	➤
36329	SL/PZ1	80	191	30		10
36330	SL/PZ2	100	218	36		10

Manufactured acc. to IEC 60900:2012.

TORX® Tamper Resistant (with hole) 6-pcs. 3251 TR K6

Order-No.	⊕	➤	➤	➤	➤	➤
41245						1

T10H x 100 / T15H x 100 / T20H x 100 / T25H x 125 / T30H x 125 / T40H x 150

Manufactured acc. to IEC 60900:2012.

TORX® Tamper Resistant (with hole) 3251 TR

Order-No.	⊕	➤	➤	➤	➤	➤
41141	T10H	100	204	23		10
41142	T15H	100	211	30		10
41143	T20H	100	211	30		10
41144	T25H	125	243	36		10
41145	T27H	125	243	36		10
41146	T30H	125	243	36		10
41147	T40H	150	268	36		10

Manufactured acc. to IEC 60900:2012.

TORX® 3251

Order-No.	⊕	➤	➤	➤	➤	➤
36536	T10	100	204	23		10
36537	T15	100	211	30		10
36538	T20	100	211	30		10
36539	T25	125	243	36		10
36540	T27	125	243	36		10
36541	T30	125	243	36		10
36542	T40	150	268	36		10

DIN ISO 8764-PH. Manufactured acc. to IEC 60900:2012.

Square 3581

Order-No.	⊕	➤	➤	➤	➤	➤
35504	#1	2,3	100	211	30	10
35505	#2	2,8	125	243	36	10

Manufactured acc. to IEC 60900:2012.

Screwdriver set SoftFinish® electric



Protects your health: With the patented SoftFinish® handle design, ensuring work is kind to hands and muscles. Recommended by doctors and therapists at German Campaign for Healthier Backs. **Increases your efficiency:** The unique Wiha handle size concept with optimal balance between power and control. **Offers you full protection:** Each tool individually tested at 10,000 V AC and approved for 1,000 V AC.

Slotted, Phillips 7-pcs. 320N K7

Order-No.	⊖	➤	➤	➤	➤	➤
00834						1
	⊖	2,5 x 75 / 4,0 x 100 / 5,5 x 125 / 6,5 x 150				
	⊕	PH1 x 80 / PH2 x 100				
	⊖	Voltage tester SoftFinish® single-pole, 110-250 volts				

Manufactured acc. to IEC 60900:2012.

Slotted, Phillips 6-pcs. 320N K6

Order-No.	⊖	➤	➤	➤	➤	➤
00833						10
	⊖	3,0 x 100 / 4,0 x 100 / 5,5 x 125 / 6,5 x 150				
	⊕	PH1 x 80 / PH2 x 100				

Manufactured acc. to IEC 60900:2012.

Slotted, Pozidriv 6-pcs. 320N ZK6 SO

Order-No.	⊖	➤	➤	➤	➤	➤
25477						1
	⊖	2,5 x 75 / 3,5 x 100 / 4,5 x 125 / 5,5 x 125				
	⊕	PZ1 x 80 / PZ2 x 100				

Manufactured acc. to IEC 60900:2012.

Screwdriver SoftFinish® electric



Protects your health: With the patented SoftFinish® handle design, ensuring work is kind to hands and muscles. Recommended by doctors and therapists at German Campaign for Healthier Backs. **Increases your efficiency:** The unique Wiha handle size concept with optimal balance between power and control. **Offers you full protection:** Each tool individually tested at 10,000 V AC and approved for 1,000 V AC.

Slotted 320N

Order-No.	⌀	Length	Tip	Shank	Head
00819	2,0	60	0,4	164	23
00820	2,5	75	0,4	179	23
00821	3,0	100	0,5	204	23
00822	3,5	100	0,6	204	23
00823	4,0	100	0,8	211	30
00824	4,5	125	1,0	236	30
00825	4,5	175	1,0	286	30
31863	4,5	200	1,0	311	30
00826	5,5	125	1,0	243	36
00827	5,5	175	1,0	293	36
00828	6,0	150	1,2	268	36
00829	6,5	150	1,2	268	36
00830	8,0	175	1,2	299	41
00831	8,0	175	1,6	299	41
00832	10,0	200	1,6	324	41

• Additional dimension. Non-DIN size.
Manufactured acc. to IEC 60900:2012.

Phillips 321N

Order-No.	⌀	Length	Tip	Shank	Head
00846	PH0	60	164	23	10
00847	PH1	80	191	30	10
00848	PH2	100	218	36	10
00849	PH3	150	268	41	10
00850	PH4	200	318	41	5

Manufactured acc. to IEC 60900:2012.

Pozidriv 324

Order-No.	⌀	Length	Tip	Shank	Head
00877	PZ0	60	164	23	10
00878	PZ1	80	191	30	10
00879	PZ2	100	218	36	10
00880	PZ3	150	324	41	5

Manufactured acc. to IEC 60900:2012.

PlusMinus/Pozidriv 328

Order-No.	⌀	Length	Tip	Shank	Head
30700	SL/PZ1	80	191	30	10
30701	SL/PZ2	100	218	36	10

Manufactured acc. to IEC 60900:2012.

TORX® 325

Order-No.	⌀	Length	Tip	Shank	Head
03760	T5	60	164	23	10
03761	T6	60	164	23	10
03762	T7	60	164	23	10
00881	T8	60	164	23	10
00882	T9	60	164	23	10

Manufactured acc. to IEC 60900:2012.

Hex 323N

Order-No.	⌀	Length	Tip	Shank	Head
30361	2,5	75	179	23	10
30362	3,0	75	179	23	10
30363	4,0	75	186	30	10
30364	5,0	75	186	30	10
30365	6,0	100	218	36	10
30366	8,0	100	218	36	10

Manufactured acc. to IEC 60900:2012.

Square 358N

Order-No.	⌀	Length	Tip	Shank	Head
32396	#1	2,3	100	211	30
32397	#2	2,8	150	268	36

Manufactured acc. to IEC 60900:2012.

Screwdriver set SoftFinish® electric



Protects your health: With the patented SoftFinish® handle design, ensuring work is kind to hands and muscles. Recommended by doctors and therapists at German Campaign for Healthier Backs. **Increases your efficiency:** The unique Wiha handle size concept with optimal balance between power and control. **Offers you full protection:** Each tool individually tested at 10,000 V AC and approved for 1,000 V AC.

Hexagon nut driver 5-pcs. 322 K5

Order-No.	⌀	Length	Tip	Shank	Head
29466					1

5,5 x 125 / 7 x 125 / 8 x 125 / 10 x 125 / 13 x 125
Manufactured acc. to IEC 60900:2012.

Screwdriver SoftFinish® electric



Protects your health: With the patented SoftFinish® handle design, ensuring work is kind to hands and muscles. Recommended by doctors and therapists at German Campaign for Healthier Backs. **Increases your efficiency:** The unique Wiha handle size concept with optimal balance between power and control. **Offers you full protection:** Each tool individually tested at 10,000 V AC and approved for 1,000 V AC.

Hex nut driver 322

Order-No.	⌀	Length	Tip	Shank	Head
00853	4	125	236	30	10,2
00855	5	125	236	30	11,2
00856	5,5	125	236	30	11,2
00857	6	125	236	30	12,2
00858	7	125	243	36	14,5
00859	8	125	243	36	15,2
00860	9	125	243	36	16,0
00861	10	125	243	36	17,2
00862	11	125	243	41	19,2
00863	12	125	243	41	20,2
00864	13	125	243	41	22,2
00865	14	125	243	41	23,2
00866	15	125	243	41	25,2
00867	16	125	243	41	25,2
00868	17	125	243	41	27,2

Manufactured acc. to IEC 60900:2012.

INFOBOX:
Combination profiles



PlusMinus.

- The special PlusMinus/Pozidriv profile is ideal for PlusMinus terminal screws.
- The combination profile reduces slipping out and guarantees a higher torque transmission.

Fine screwdriver set PicoFinish electric



Simplifies your work: Sensitive working due to slim handle and rotating cap. **Increases your efficiency:** Screwdriver handle size concept for an optimal balance between precision and control. **Offers you full protection:** Each tool individually tested at 10,000 V AC and approved for 1,000 V AC.

Slotted, Phillips 6-pcs.

2270P K6

Order-No.	Icon
38996	1
⊖	1,5 x 40 / 2,0 x 40 / 2,5 x 60 / 3,0 x 60
⊕	PH00 x 40 / PH0 x 60

DIN ISO 8764. Manufactured acc. to IEC 60900:2012.

Fine screwdriver PicoFinish electric



Simplifies your work: Sensitive working due to slim handle and rotating cap. **Increases your efficiency:** Screwdriver handle size concept for an optimal balance between precision and control. **Offers you full protection:** Each tool individually tested at 10,000 V AC and approved for 1,000 V AC.

⊖ Slotted

2270P

Order-No.	⊖	⊖	⊖	●	⊖	⊖	⊖
38874	1,5	40	0,25	2,0	148	18	10
38875	2,0	40	0,4	2,0	148	18	10
38876	2,5	60	0,4	2,5	163	18	10
38877	3,0	60	0,5	3,0	163	18	10
38878	3,5	60	0,6	3,5	163	18	10

Manufactured acc. to IEC 60900:2012.

⊕ Phillips

2271P

Order-No.	⊕	●	⊖	⊖	⊖
38879	PH00	40	2,0	148	18
38880	PH0	60	3,0	163	18
38881	PH1	60	4,0	163	18

Manufactured acc. to IEC 60900:2012.

INFOBOX:
PicoFinish electric



Wiha PicoFinish electric: The VDE-GS tested precision screwdriver.

- The smooth-running turn-cap enables fast turning.
- Imprint with the screw symbol and sizes eases recognition.

L-key with T-handle electric



Simplifies your work: More power when fastening thanks to the leverage from the T-handle design **Increases your efficiency:** Handle size concept for an optimum balance between torque and control **Offers you full protection:** Each tool individually tested at 10,000 V AC and approved for 1,000 V AC.

● Hex

334N

Order-No.	●	⊖	⊖	⊖	⊖	⊖
27928	4	150	176	80	26	10
27929	5	150	182	100	32	10
27930	6	150	182	100	32	10
27931	8	150	182	100	32	10

Manufactured acc. to IEC 60900:2012.

Nut driver with T-handle electric



Simplifies your work: More power when fastening thanks to the leverage from the T-handle design **Increases your efficiency:** Handle size concept for an optimum balance between torque and control **Offers you full protection:** Each tool individually tested at 10,000 V AC and approved for 1,000 V AC.

○ Hex

336N

Order-No.	○	⊖	⊖	⊖	⊖	⊖
27932	8	200	232	100	32	10
27933	10	230	262	100	32	10
27934	13	230	262	100	32	10
27935	17	230	268	120	38	10

Manufactured acc. to IEC 60900:2012.

Single open-end spanner insulated



Increases your safety: Double-layered insulation provides immediate feedback on the safety condition of the tool. **Offers you full protection:** Each tool individually tested at 10,000 V AC and approved for 1,000 V AC.

Order-No.	Size	Quantity
36543	6	1
36544	7	1
36586	8	1
36639	9	1
36640	10	1
36641	11	1
36642	12	1
36643	13	1
36644	14	1
36645	15	1
36646	16	1
36647	17	1
36648	19	1
36649	22	1
36650	24	1

DIN 7446. Manufactured according to EN/IEC 60900:2012.

Insulated extension



Increases your safety: Double-layered insulation provides immediate feedback on the safety condition of the tool. **Offers you full protection:** Each tool individually tested at 10,000 V AC and approved for 1,000 V AC.

Order-No.	Size	Quantity
36684	125 1/2"	1

Manufactured according to EN/IEC 60900:2012.

Ratchet box spanner insulated



Increases your safety: Double-layered insulation provides immediate feedback on the safety condition of the tool. **Offers you full protection:** Each tool individually tested at 10,000 V AC and approved for 1,000 V AC.

Order-No.	Size	Quantity
36666	8	1
36667	10	1
36668	12	1
36669	13	1
36670	14	1
36671	17	1
36672	19	1

Manufactured according to EN/IEC 60900:2012.

Nut driver insert insulated



Increases your safety: Double-layered insulation provides immediate feedback on the safety condition of the tool. **Offers you full protection:** Each tool individually tested at 10,000 V AC and approved for 1,000 V AC.

Order-No.	Size	Quantity
36685	10	1
36686	12	1
36687	13	1
36688	14	1
36689	17	1
36690	19	1
36691	22	1
36692	24	1

Manufactured according to EN/IEC 60900:2012.

Insulated reversible ratchet



Increases your safety: Double-layered insulation provides immediate feedback on the safety condition of the tool. **Offers you full protection:** Each tool individually tested at 10,000 V AC and approved for 1,000 V AC.

Order-No.	Size	Quantity
36683	1/2" 260	1

Manufactured according to EN/IEC 60900:2012.

Insulated reversible ratchet



Increases your safety: Double-layered insulation provides immediate feedback on the safety condition of the tool. **Offers you full protection:** Each tool individually tested at 10,000 V AC and approved for 1,000 V AC.

Order-No.	Size	Quantity
36673	3/8" 190	1

Manufactured according to EN/IEC 60900:2012.

Insulated extension



Increases your safety: Double-layered insulation provides immediate feedback on the safety condition of the tool. **Offers you full protection:** Each tool individually tested at 10,000 V AC and approved for 1,000 V AC.

Order-No.	Size	Quantity
36674	125 3/8"	1

Manufactured according to EN/IEC 60900:2012.

Nut driver insert insulated



Increases your safety: Double-layered insulation provides immediate feedback on the safety condition of the tool. **Offers you full protection:** Each tool individually tested at 10,000 V AC and approved for 1,000 V AC.

Order-No.	Size	Quantity
36675	8	1
36676	10	1
36677	11	1
36678	12	1
36679	13	1
36680	14	1
36681	17	1
36682	19	1

Manufactured according to EN/IEC 60900:2012.

L-key insulated



Increases your safety: Double-layered insulation provides immediate feedback on the safety condition of the tool. **Offers you full protection:** Each tool individually tested at 10,000 V AC and approved for 1,000 V AC.

Order-No.	Size	Quantity
36659	3	1
36660	4	1
36661	5	1
36662	6	1
36663	8	1
36664	10	1
36665	12	1

Manufactured according to EN/IEC 60900:2012.

Switch cabinet key pen shape



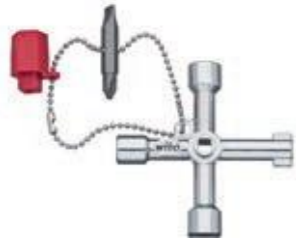
Increases your efficiency: All keys and profiles integrated into one compact, lightweight tool.

1/4" in blister pack

SB 246 81

Order-No.	⊖	⊕	⊖	⊕	⊕	⊕	⊕
39076	5-8	9	3-5	7,0	PH2	T20 / T25	1

Switch cabinet key cross shape



Increases your efficiency: All keys and profiles integrated into one compact, lightweight tool.

⊖

246 67

Order-No.	⊖	⊕	⊖	⊕	⊕	⊕
36114	5-8	9	3-5	7,0	PH2	1

INFOBOX:
Solid steel cap and hexagon head



- The solid steel cap at the end of the screwdriver handle enables targeted hammering, e.g. to loosen jammed screws.
- The direct connection of the solid steel cap to the blade means that the impact energy is transmitted without any loss.
- Blade includes a hexagon bolster for using a set of spanners for additional torque.

Screwdriver SoftFinish®



Simplifies your work: Striking cap integrated into the handle allows you to strike and lift with the screwdriver. **Facilitates handling:** Easy loosening of tight screws thanks to hex bolster for spanners. **Protects your health:** With the patented SoftFinish® handle design, ensuring work is kind to hands and muscles. Recommended by doctors and therapists at German Campaign for Healthier Backs. **Increases your efficiency:** Screwdriver handle size concept for an optimal balance between precision and control.

⊖ Slotted with one-piece hexagonal blade and solid steel cap

530

Order-No.	⊖	⊕	⊖	⊕	⊕	⊕	⊕
03223	3,5	75	0,6	4,0	-	186	10
03224	4,5•	90	0,8	4,0	-	201	10
03225	5,5	100	1,0	5,0	8	213	10
03226	6,5	125	1,2	6,0	10	238	10
03228	8,0	150	1,2	8,0	13	271	5
03230	10,0	175	1,6	8,0	13	296	5
03231	12,0	200	2,0	10,0	16	321	5
03232	14,0•	250	2,5	10,0	16	371	5

• Additional dimension. Non-DIN size.

⊕ Phillips with one-piece hexagonal blade and solid steel cap

531

Order-No.	⊕	⊕	⊕	⊕	⊕	⊕	⊕
03237	PH1	80	5,0	8	186	30	10
03238	PH2	100	6,0	10	213	36	10
03239	PH3	150	8,0	13	268	41	10

⊕ Pozidriv with one-piece hexagonal blade and solid steel cap

532

Order-No.	⊕	⊕	⊕	⊕	⊕	⊕	⊕
03245	PZ1	80	5,0	8	186	30	10
03246	PZ2	100	6,0	10	213	36	10
03247	PZ3	150	8,0	13	268	41	10

Screwdriver SoftFinish®



Protects your health: With the patented SoftFinish® handle design, ensuring work is kind to hands and muscles. Recommended by doctors and therapists at German Campaign for Healthier Backs. **Increases your efficiency:** The unique Wiha handle size concept with optimal balance between power and control.

⊖ Slotted with round blade for low-lying screws

302

Order-No.	⊖	⊕	⊖	⊕	⊕	⊕	⊕
00684	2,0•	65	0,4	2,0	169	23	10
00685	2,5	75	0,4	2,5	179	23	10
00686	3,0•	80	0,5	3,0	184	23	10
00687	3,0	100	0,5	3,0	204	23	10
00689	3,0•	150	0,5	3,0	254	23	10
00690	3,0•	200	0,5	3,0	304	23	10
32383	3,0	300	0,5	3,0	404	23	5
00691	3,5	100	0,6	3,5	204	23	10
26931	3,5•	200	0,6	3,5	304	23	10
00692	4,0	100	0,8	4,0	211	30	10
00694	4,0•	150	0,8	4,0	261	30	10
00695	4,0•	200	0,8	4,0	311	30	10
00696	4,0•	300	0,8	4,0	411	30	10
27753	4,5•	80	0,8	4,5	191	30	10
00697	4,5•	125	0,8	4,5	236	30	10
00698	5,5	125	1,0	5,5	236	30	10
00700	5,5	150	1,0	5,5	261	30	10
00701	5,5•	200	1,0	5,5	311	30	10
00702	5,5•	300	1,0	5,5	411	30	5
32384	6,0•	300	1,0	6,0	418	36	5

• Additional dimension. Non-DIN size.

Screwdriver SoftFinish®



Protects your health: With the patented SoftFinish® handle design, ensuring work is kind to hands and muscles. Recommended by doctors and therapists at German Campaign for Healthier Backs. **Increases your efficiency:** The unique Wiha handle size concept with optimal balance between power and control.

⊖ Slotted with round blade

302

Order-No.	⊖	⊕	⊖	⊕	⊕	⊕	⊕
27754	6,0	100	1,0	5,5	218	36	10
27755	6,0	150	1,0	5,5	268	36	10
00704	6,5	100	1,2	6,0	218	36	10
00703	6,5	150	1,2	6,0	268	36	10
00706	6,5•	200	1,2	6,0	318	36	10
00708	8,0	150	1,2	7,0	274	41	10
00707	8,0	175	1,2	7,0	299	41	10
00709	8,0	175	1,6	7,0	299	41	5
32399	8,0	300	1,2	7,0	424	41	5
00711	10,0	200	1,6	8,0	324	41	10
32400	10,0	300	1,6	8,0	424	41	5
00712	12,0	250	2,0	8,0	374	41	10
00713	14,0•	250	2,5	11,0	374	41	10

• Additional dimension. Non-DIN size. DIN ISO 2380.

Bit holder CentroFix mechanically lockable



Simplifies your work: Ideal for all applications due to the non-magnetic locking mechanism. **Increases your efficiency:** Extremely secure and tight zero-play hold of bits.

1/4" 7148C

Order-No.	1/4"	1/4"	60	10
32477	1/4	1/4	60	10

Bit holder CentroFix Super Slim mechanically lockable



Saves time: Automatic bit locking mechanism upon insertion. **Increases your efficiency:** Unlimited access to deep-set screws thanks to extreme slimline design.

1/4" 7148 CS

Order-No.	1/4"	1/4"	66	1
39134	1/4	1/4	66	1

Bit holder magnetic, clamping with retaining ring



Simplifies your work: Unrestricted access to low-lying screws thanks to bit holder lengths of up to 250mm. **Increases your efficiency:** Unlimited access to deep-set screws thanks to extreme slimline design.

1/4" 7143

Order-No.	1/4"	1/4"	72	2
01913	1/4	1/4	72	2
36092	1/4	1/4	100	5
34306	1/4	1/4	150	5
36093	1/4	1/4	200	5
36094	1/4	1/4	250	5

Bit Professional 70 mm



Meets your requirements: Robust and precise bits for general fastening in trade and industry. **Saves time:** Simple and quick recognition of profile sizes thanks to contrasting laser marking. **Increases your efficiency:** Best rotation characteristics for stable fastening processes.

Slotted 1/4" 7040 Z

Order-No.	2,5	70	0,4	5
33961	2,5	70	0,4	5
01790	3,0	50	0,5	5
33962	3,0	70	0,5	5
01792	3,5	50	0,6	5
33963	3,5	70	0,6	5
01791	4,0	50	0,5	5
01794	4,0	50	0,8	5
33964	4,0	70	0,8	5
01793	4,5	50	0,6	5
01795	5,5	50	0,8	5
01796	5,5	50	1,0	5
33965	5,5	70	1,0	5
01798	6,5	50	1,2	5
33966	6,5	70	1,2	5
01799	8,0	50	1,2	5
01800	8,0	50	1,6	5

PlusMinus/Phillips 1/4" 7042 Z

Order-No.	PZ0	50	5
31957	PZ0	50	5
31958	PZ0	70	5
31959	PZ0	90	5
33706	PZ1	50	5
01808	PZ1	70	5
01809	PZ1	90	5
23221	PZ1	110	5
23225	PZ1	127	5
23227	PZ1	150	5
33707	PZ2	50	5
01811	PZ2	70	5
01812	PZ2	90	5
05799	PZ2	110	5
06889	PZ2	127	5
23228	PZ2	150	5
33708	PZ3	50	5
04059	PZ3	70	5
04176	PZ3	90	5
23223	PZ3	110	5
23226	PZ3	127	5
22512	PZ3	150	5

Bit Professional 70 mm



Meets your requirements: Robust and precise bits for general fastening in trade and industry. **Saves time:** Simple and quick recognition of profile sizes thanks to contrasting laser marking. **Increases your efficiency:** Best rotation characteristics for stable fastening processes.

Phillips 1/4" 7041 Z

Order-No.	PH0	50	5
31960	PH0	50	5
31961	PH0	70	5
31962	PH0	90	5
32105	PH0	50	5
35456	PH0	70	5
35457	PH0	90	5
33703	PH1	50	5
01803	PH1	70	5
04126	PH1	90	5
23213	PH1	110	5
23219	PH1	127	5
22509	PH1	150	5
33704	PH2	50	5
01805	PH2	70	5
04009	PH2	90	5
05800	PH2	110	5
06888	PH2	127	5
22510	PH2	150	5
33705	PH3	50	5
04010	PH3	70	5
04127	PH3	90	5
23215	PH3	110	5
23217	PH3	127	5
22511	PH3	150	5

PlusMinus/Phillips 1/4" 7049XH

Order-No.	SL/PH1	50	5
32490	SL/PH1	50	5
32491	SL/PH1	70	5
32686	SL/PH1	90	5
32492	SL/PH2	50	5
32493	SL/PH2	70	5
32687	SL/PH2	90	5

TORX® ball end 1/4" 7045BE

Order-No.	T9	50	5
32409	T9	50	5
32410	T10	50	5
32416	T10	70	5
32417	T15	50	5
32418	T15	70	5
32411	T20	50	5
32419	T20	70	5
32412	T25	50	5
32421	T25	70	5
32413	T27	50	5
32414	T30	50	5
32423	T30	70	5
32415	T40	50	5

TORX® MagicSpring® 1/4" 7045R

Order-No.	T10	50	5
34452	T10	50	5
34453	T15	50	5
34454	T20	50	5
34455	T25	50	5
34456	T30	50	5
34457	T40	50	5

PlusMinus/Pozidriv 1/4" 7049XZ

Order-No.	SL/PZ1	50	5
32494	SL/PZ1	50	5
32495	SL/PZ1	70	5
32688	SL/PZ1	90	5
32496	SL/PZ2	50	5
32497	SL/PZ2	70	5
32689	SL/PZ2	90	5

Bit Professional 70 mm



TORX PLUS® 1/4"

7046 Z

Order-No.	Icon	Size	Count
39195	1IP	50	5
39196	2IP	50	5
32486	3IP	50	5
39197	4IP	50	5
39198	4IP	90	5
28481	5IP	50	5
39199	5IP	90	5
31973	6IP	90	5
26000	6IP	50	5
26002	7IP	50	5
23195	8IP	50	5
31975	8IP	90	2
23197	9IP	50	5
23199	10IP	50	5
31977	10IP	90	5
23201	15IP	50	5
25553	15IP	90	5
23203	20IP	50	5
39200	20IP	90	5
23205	25IP	50	5
39201	25IP	90	5
23207	27IP	50	5
39202	27IP	90	5
23209	30IP	50	5
39203	30IP	90	5
23211	40IP	50	5
39204	40IP	90	5

TORX® Tamper Resistant (with hole) 1/4"

7045 Z TR

Order-No.	Icon	Size	Count
21045	T7H	50	5
21047	T8H	50	5
20218	T9H	50	5
20219	T10H	50	5
39188	T10H	90	5
24867	T15H	50	5
39189	T15H	90	5
20220	T20H	50	5
39190	T20H	90	5
20221	T25H	50	5
39191	T25H	90	5
20222	T27H	50	5
39192	T27H	90	5
20223	T30H	50	5
39193	T30H	90	5
20224	T40H	50	5
39194	T40H	90	5

TORX® 1/4"

7045 Z

Order-No.	Icon	Size	Count
39184	T1	50	5
39185	T2	50	5
39186	T3	50	5
39187	T4	50	5
32299	T5	50	5
32302	T6	50	5
33709	T6	70	5
33717	T6	90	5
38370	T6	150	5
32303	T7	50	5
33710	T7	70	5
33718	T7	90	5
38371	T7	150	5
32304	T8	50	5
33711	T8	70	5
33719	T8	90	5
36327	T8	150	5
32305	T9	50	5
33712	T9	70	5
33720	T9	90	5
38372	T9	150	5
32306	T10	50	5
33713	T10	70	5
33721	T10	90	5
33725	T10	110	5
33726	T10	150	5
32307	T15	50	5
33714	T15	70	5
33722	T15	90	5
33727	T15	110	5
33728	T15	150	5
32308	T20	50	5
33715	T20	70	5
33723	T20	90	5
33729	T20	110	5
33730	T20	150	5
32309	T25	50	5
33716	T25	70	5
33724	T25	90	5
33731	T25	110	5
33732	T25	150	5
33920	T27	50	5
33921	T27	70	5
33922	T27	90	5
33923	T30	50	5
33924	T30	70	5
33925	T30	90	5
33926	T30	110	5
33927	T30	150	5
33928	T40	50	5
33929	T40	70	5
33930	T40	90	5
33931	T40	110	5
33932	T40	150	5

Hexagonal ball end 1/4"

7047R Z

Order-No.	Icon	Size	Count
25739	3,0	50	5
25740	4,0	50	5
25741	5,0	50	5
25742	6,0	50	5

MagicRing® hex 1/4"

7043R Z

Order-No.	Icon	Size	Count
23145	3,0	50	5
23147	4,0	50	5
23149	5,0	50	5
23151	6,0	50	5

Hexagon 1/4"

7043 Z

Order-No.	Icon	Size	Count
05301	1,5	50	5
05302	2,0	50	5
34554	2,0	70	5
39178	2,0	90	5
05303	2,5	50	5
34555	2,5	70	5
39179	2,5	90	5
04194	3,0	50	5
34556	3,0	70	5
39180	3,0	90	5
04195	4,0	50	5
34557	4,0	70	5
39181	4,0	90	5
04196	5,0	50	5
34558	5,0	70	5
39182	5,0	90	5
04197	6,0	50	5
34559	6,0	70	5
39183	6,0	90	5
04198	8,0	50	5
34560	8,0	70	5

Square 1/4"

7048 Z

Order-No.	Icon	Size	Count
06637	#1	2,3 50	5
39206	#1	2,3 90	5
06638	#2	2,8 50	5
39207	#2	2,8 90	5
06639	#3	3,3 50	5
39208	#3	3,3 90	5

Screwdriver with bit magazine LiftUp 25 magnetic



Simplifies your work: Larger handle – maximum power. **Protects your health:** No risk of injury, all blades stowed safely inside the handle. **Increases your efficiency:** 80 % less volume, 80 % less weight - 100% efficiency

assorted with 12 bits, 1/4"

3803 02-021

Order-No.	Icon	Count
38601		5
⊖	1 x 5,5	
⊕	1 x PH2	
⊗	1 x PZ1 / 1 x PZ2 / 1 x PZ3	
⊙	1 x T15 / 1 x T20 / 1 x T25 / 1 x T30	
●	1 x 3,0 / 1 x 4,0 / 1 x 5,0	

Screwdriver with bit magazine magnetic



Saves space: Six tools in one. **Increases your efficiency:** Unrestricted access to confined spaces thanks to extremely short screwdriver handle.

Slotted, Phillips with 6 bits, Stubby, 1/4"

3801 01

Order-No.	Icon	Count
33736		10
⊖	1 x 4,5 / 1 x 6,5 / 1 x 8,0	
⊕	1 x PH1 / 1 x PH2 / 1 x PH3	

TORX® with 6 bits, Stubby, 1/4"

3801 03

Order-No.	Icon	Count
33743		10
⊗	1 x T10 / 1 x T15 / 1 x T20 / 1 x T25 / 1 x T30 / 1 x T40	

Slotted, Pozidriv with 6 bits, Stubby, 1/4"

3801 04

Order-No.	Icon	Count
33764		10
⊖	1 x 4,5 / 1 x 6,5 / 1 x 8,0	
⊗	1 x PZ1 / 1 x PZ2 / 1 x PZ3	

Three. For all your jobs.



Which machine? Which application? Which bit?

The revolutionary Wiha bit concept puts an end to any confusion and presents three bit types which can cover all areas of use.

Only the screw shape is crucial for selecting the bit.

The Y bit is ideal for fastening Y-shaped screws with an angle no greater than 90° between the thread and screw head. The T bit is used for T-shaped screws at a 90° angle. If you need to fasten both screw types, then the TY bit is the right choice since this universal bit is suitable for all type of fastenings.

- **Increases your efficiency**

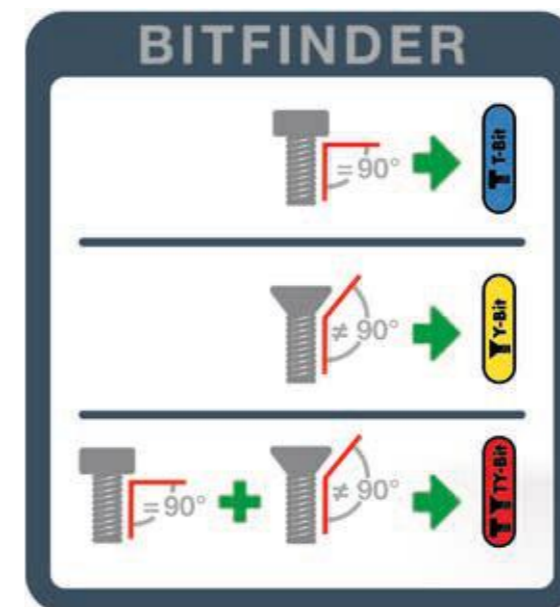
The specialist with 120x greater lifespan* thanks to optimised bits.

- **Lowers your costs**

Bit quick and easy to find thanks to marking – even in dark environments when a UV light is used.

- **Saves time**

No long searches thanks to fluorescent bit, infrequent bit replacement thanks to long lifespan.



BitBuddy® TY bit set, 49 mm



Lowers your costs: Bit quick and easy to find thanks to red marking – even in dark environments by using an UV light. **Saves time:** No long searches thanks to fluorescent bit, infrequent bit replacement thanks to long lifespan. Automatic opening at the push of a button and simple bit change directly in the holder. **Increases your efficiency:** The all-rounder with 120x greater lifespan* thanks to patented bit technology, suitable for all screws. (*compared to Wiha standard bit)

Pozidriv 1/4" 7-pcs. SB 7946-TY202

Order-No.	42099	6
+	PZ1 x 49 / PZ2 x 49 / PZ3 x 49	

Hexagon 1/4" 7-pcs. SB 7946-TY303

Order-No.	42114	6
●	SW3 x 49 / SW4 x 49 / SW5 x 49 / SW6 x 49	

TORX® 1/4" 7-pcs. SB 7946-TY505

Order-No.	42115	6
⊕	T10 x 49 / T15 x 49 / T20 x 49 / T25 x 49 / T30 x 49 / T40 x 49	

Phillips, Pozidriv, TORX®, 7-pcs., 1/4" SB 7946-TY903

Order-No.	42116	6
+	PH2 x 49	
+	PZ1 x 49 / PZ2 x 49 / PZ3 x 49	
⊕	T15 x 49 / T20 x 49 / T25 x 49	

Phillips, Pozidriv, TORX®, 7-pcs., 1/4" SB 7946-TY904

Order-No.	42117	6
+	PH2 x 49	
+	PZ1 x 49 / PZ2 x 49	
⊕	T10 x 49 / T15 x 49 / T20 x 49 / T25 x 49	

Pozidriv, TORX® 7-pcs. 1/4" in box SB 7946-TY905

Order-No.	42118	6
+	PZ2 x 49 / PZ3 x 49	
⊕	T15 x 49 / T20 x 49 / T25 x 49 / T30 x 49 / T40 x 49	

BitBuddy® TY bit set, 29 mm



Lowers your costs: Bit quick and easy to find thanks to red marking – even in dark environments by using an UV light. **Saves time:** No long searches thanks to fluorescent bit, infrequent bit replacement thanks to long lifespan. Automatic opening at the push of a button and simple bit change directly in the holder. **Increases your efficiency:** The all-rounder with 120x greater lifespan* thanks to patented bit technology, suitable for all screws. (*compared to Wiha standard bit)

Pozidriv 1/4" 8-pcs. SB 7945-TY202

Order-No.	42098	6
+	PZ1 x 29 / PZ2 x 29 / PZ3 x 29	
○	1x Bit holder magnetic 1/4"	

Hexagon 8-pcs. 1/4" SB 7945-TY303

Order-No.	42135	6
●	SW3 x 29 / SW4 x 29 / SW5 x 29 / SW6 x 29	
○	1x Bit holder magnetic 1/4"	

TORX® 1/4" 8-pcs. SB 7945-TY505

Order-No.	42136	6
⊕	T10 x 29 / T15 x 29 / T20 x 29 / T25 x 29 / T30 x 29 / T40 x 29	
○	1x Bit holder magnetic 1/4"	

Phillips, Pozidriv, TORX®, 8-pcs., 1/4" SB 7945-TY903

Order-No.	42137	6
+	PH2 x 29	
+	PZ1 x 29 / PZ2 x 29 / PZ3 x 29	
⊕	T15 x 29 / T20 x 29 / T25 x 29 /	
○	1x Bit holder magnetic 1/4"	

Phillips, Pozidriv, TORX®, 8-pcs., 1/4" SB 7945-TY904

Order-No.	42138	6
+	PH2 x 29	
+	PZ1 x 29 / PZ2 x 29 / PZ3 x 29	
⊕	T15 x 29 / T20 x 29 / T25 x 29	
○	1x Bit holder magnetic 1/4"	

Phillips, Pozidriv, TORX®, 8-pcs., 1/4" SB 7945-TY905

Order-No.	42139	6
+	PZ2 x 29 / PZ3 x 29	
⊕	T15 x 29 / T20 x 29 / T25 x 29 / T30 x 29 / T40 x 29	
○	1x Bit holder magnetic 1/4"	

XLSelector T bit set, 50 mm



Lowers your costs: Bit quick and easy to find thanks to blue marking – even in dark environments by using an UV light. **Saves time:** No long searches thanks to fluorescent bit, infrequent bit replacement thanks to long lifespan. **Increases your efficiency:** The specialist with 120x greater lifespan* thanks to optimised bit for T-shaped screws. (*compared to Wiha standard bit)

Phillips, TORX®, hex 13-pcs. 1/4" SB 7948-T950

Order-No.	41831	6
+	PH1 x 50 / PH2 x 50 / PH3 x 50	
⊕	T15 x 50 / T20 x 50 / T25 x 50 / T30 x 50 / T40 x 50	
●	SW3 x 50 / SW4 x 50 / SW5 x 50 / SW6 x 50	
○	1x Bit holder magnetic 1/4"	

Phillips, TORX®, hex 31-pcs. 1/4" SB 7948-T999

Order-No.	41830	6
+	PH1 x 25 / PH2 x 25 / PH3 x 25	
⊕	T10 x 25 / T15 x 25 / T20 x 25 / T25 x 25 / T30 x 25 / T40 x 25	
●	SW3 x 25 / SW4 x 25 / SW5 x 25 / SW6 x 25	
○	1x Bit holder magnetic 1/4"	

XLSelector Y bit set, 50 mm



Lowers your costs: Bit quick and easy to find thanks to yellow marking – even in dark environments by using an UV light. **Saves time:** No long searches thanks to fluorescent bit, infrequent bit replacement thanks to long lifespan. **Increases your efficiency:** The specialist with 120x greater lifespan* thanks to optimised bit for Y-shaped screws. (*compared to Wiha standard bit)

TORX® 31-pcs. 1/4" SB 7948-Y505

Order-No.	41833	6
+	T10 x 25 / T15 x 25 / T20 x 25 / T25 x 25 / T30 x 25 / T40 x 25	
○	1x Bit holder magnetic 1/4"	

Phillips, Pozidriv, TORX®, 31-pcs., 1/4" SB 7948-Y904

Order-No.	41832	6
+	PH1 x 25 / PH2 x 25 / PH3 x 25	
+	PZ1 x 25 / PZ2 x 25 / PZ3 x 25	
+	T10 x 25 / T15 x 25 / T20 x 25 / T25 x 25 / T30 x 25 / T40 x 25	
○	1x Bit holder magnetic 1/4"	

Phillips, Pozidriv, TORX®, 13-pc., 1/4" SB 7948-Y950

Order-No.	41834	6
+	PH2 x 50	
+	PZ1 x 50 / PZ2 x 50 / PZ3 x 50	
+	T10 x 50 / T15 x 50 / T20 x 50 / T25 x 50 / T30 x 50 / T40 x 50	
○	1x Bit holder magnetic 1/4"	

FlipSelector T bit set, 25 mm



Lowers your costs: Bit quick and easy to find thanks to blue marking – even in dark environments by using an UV light. **Saves time:** No long searches thanks to fluorescent bit, infrequent bit replacement thanks to long lifespan. Simple and rapid bit removal thanks to clear organisation and automatic opening at the push of a button. **Increases your efficiency:** The specialist with 120x greater lifespan* thanks to optimised bit for T-shaped screws. (*compared to Wiha standard bit)

Hexagon 16-pcs. 1/4" SB 7947-T303

Order-No.	41825	6
●	SW3 x 25 / SW4 x 25 / SW5 x 25 / SW6 x 25	
○	1x Bit holder magnetic 1/4"	

Phillips, Pozidriv, TORX®, 13-pcs., 1/4" SB 7947-T906

Order-No.	41824	6
+	PH1 x 25 / PH2 x 25 / PH3 x 25	
+	PZ2 x 25	
+	T10 x 25 / T15 x 25 / T20 x 25 / T25 x 25 / T30 x 25 / T40 x 25	
○	1x Bit holder magnetic 1/4"	

assorted 1/4" 13-pcs. SB 7947-T999

Order-No.	41826	6
+	PH1 x 25 / PH2 x 25 / PH3 x 25	
+	PZ2 x 25	
+	T15 x 25 / T20 x 25 / T25 x 25 / T30 x 25 / T40 x 25	
●	SW4 x 25 / SW5 x 25 / SW6 x 25	
○	1x Bit holder magnetic 1/4"	

FlipSelector Y bit set, 25 mm



Lowers your costs: Bit quick and easy to find thanks to yellow marking – even in dark environments by using an UV light. **Saves time:** No long searches thanks to fluorescent bit, infrequent bit replacement thanks to long lifespan. Simple and rapid bit removal thanks to clear organisation and automatic opening at the push of a button. **Increases your efficiency:** The specialist with 120x greater lifespan* thanks to optimised bit for Y-shaped screws. (*compared to Wiha standard bit)

Pozidriv 1/4" 13-pcs. SB 7947-Y202

Order-No.	41829	6
+	PZ1 x 25 / PZ2 x 25 / PZ3 x 25	
○	1x Bit holder magnetic 1/4"	

TORX® 1/4" 13-pcs. SB 7947-Y505

Order-No.	41828	6
	T10 x 25 / T15 x 25 / T20 x 25 / T25 x 25 / T30 x 25 / T40 x 25	
○	1x Bit holder magnetic 1/4"	

Phillips, Pozidriv, TORX®, 13-pcs., 1/4" SB 7947-Y904

Order-No.	41827	6
+	PH2 x 25	
+	PZ1 x 25 / PZ2 x 25 / PZ3 x 25	
+	T10 x 25 / T15 x 25 / T20 x 25 / T25 x 25 / T30 x 25 / T40 x 25	
○	1x Bit holder magnetic 1/4"	

Bit set XLSelector Standard 25 mm



Meets your requirements: Robust and precise bits for general fastening in trade and industry. **Saves time:** Simple and quick recognition of profile sizes thanks to contrasting laser marking. **Increases your efficiency:** All standard 25 mm bits organised in a compact, space-saving design.

assorted 1/4" 31-pcs. 7948-005

Order-No.	29417	5
⊖	1 x 4,5 / 1 x 5,5 / 1 x 6,5	
+	2 x PH1 / 4 x PH2 / 1 x PH3	
+	2 x PZ1 / 5 x PZ2 / 1 x PZ3	
+	2 x T10 / 2 x T15 / 2 x T20 / 3 x T25 / 2 x T30 / 1 x T40	
○	1 x Bit holder magnetic, 58 mm 1/4"	

assorted 1/4" 31-pcs. 7948-927

Order-No.	29416	5
⊖	1 x 0 / 1 x 1 / 1 x 2 / 1 x 3 / 1 x 4	
⊕	1 x 4 / 1 x 6 / 1 x 8 / 1 x 10	
●	1 x TR 2,0 / 1 x TR2,5 / 1 x TR3,0 / 1 x TR4,0 / 1 x TR5,0 / 1 x TR 6,0	
+	1 x 6 / 1 x 8 / 1 x 10	
+	1 x T8H / 1 x T9H / 1 x T10H / 1 x T15H / 1 x T20H / 1 x T25H / 1 x T27H / 1 x T30H / 1 x T40H	
■	1 x #1 / 1 x #2 / 1 x #3	
○	1 x Bit holder CentroFix Force mechanically lockable 1/4"	

Bit set FlipSelector Standard 25 mm



Meets your requirements: Robust and precise bits for general fastening in trade and industry. **Simplifies your work:** Simple and rapid bit removal thanks to clear organisation and automatic opening at the push of a button. **Saves time:** Simple and quick recognition of profile sizes thanks to contrasting laser marking.

assorted 1/4" 13-pcs. 7947-999

Order-No.	39078	10
⊖	1 x 5,5	
⊕	1 x PH2	
⊕	1 x PZ1 / 1 x PZ2 / 1 x PZ3	
⊕	1 x T15 / 1 x T20 / 1 x T25 / 1 x T30	
●	1 x 3,0 / 1 x 4,0 / 1 x 5,0	
○	1 x Bit holder magnetic, 58 mm 1/4"	

Slotted, Phillips, Pozidriv 1/4" 13-pcs. 7947-005

Order-No.	39029	10
⊖	1 x 5,5	
⊕	1 x PH1 / 3 x PH2 / 1 x PH3	
⊕	1 x PZ1 / 4 x PZ2 / 1 x PZ3	
○	1 x Bit holder magnetic, 58 mm 1/4"	

Pozidriv, TORX® 1/4" 13-pcs. 7947-904

Order-No.	39040	10
⊕	2 x PH2	
⊕	1 x PZ1 / 2 x PZ2 / 1 x PZ3	
⊕	1 x T10 / 1 x T15 / 1 x T20 / 1 x T25 / 1 x T30 / 1 x T40	
○	1 x Bit holder magnetic, 58 mm 1/4"	

Pozidriv, TORX® 1/4" 13-pcs. 7947-905

Order-No.	39041	10
⊕	1 x PZ1 / 2 x PZ2 / 1 x PZ3	
⊕	1 x T10 / 1 x T15 / 2 x T20 / 2 x T25 / 1 x T30 / 1 x T40	
○	1 x Bit holder magnetic, 58 mm 1/4"	

TORX® 1/4" 13-pcs. 7947-505

Order-No.	39124	10
⊕	1 x T7 / 1 x T8 / 1 x T9 / 1 x T10 / 2 x T15 / 2 x T20 / 2 x T25 / 1 x T30 / 1 x T40	
○	1 x Bit holder magnetic, 58 mm 1/4"	

TORX® Tamper Resistant (with hole) 1/4" 13-pcs. 7947-505TR

Order-No.	39037	10
⊕	1 x T7H / 1 x T8H / 1 x T9H / 1 x T10H / 2 x T15H / 2 x T20H / 2 x T25H / 1 x T30H / 1 x T40H	
○	1 x Bit holder magnetic, 58 mm 1/4"	

Hexagon 1/4" 11-pcs. 7947-902

Order-No.	39039	10
●	1 x 1,5 / 1 x 2,0 / 1 x 2,5 / 2 x 3,0 / 2 x 4,0 / 1 x 5,0 / 1 x 6,0 / 1 x 8,0	
○	1 x Bit holder magnetic, 58 mm 1/4"	

SIT (for Assy® and Pias screws), 13-pcs., 1/4" 7947-995

Order-No.	39045	10
●	2 x SIT 10 / 4 x SIT 20 / 3 x SIT 25 / 2 x SIT 30 / 1 x SIT 40	
○	1 x Bit holder magnetic, 58 mm 1/4"	

High-performance offset screwdriver with quick release holder 1/4"



Simplifies your work: Secure screw guidance thanks to a magnet integrated into the bit holder. **Increases your safety:** Variably settable stabiliser arm. **Increases your efficiency:** Unlimited access to hard-to-reach screws thanks to the 105°-angled tool head.

1/4" in blister pack SB24628

Order-No.	32310	1/4	1/4	165	57	1
-----------	-------	-----	-----	-----	----	---



Perfect order when fast work is required.



Perfect order and easy handling - the ErgoStar L-key holder provides both: Rotating a single L-key in the holder means that all other keys rotate at the same angle! Keys sitting next to each other no longer need to be disengaged. Instead, all keys are ready for removal with one turn - as fast and easy as never before. The keys of the ErgoStar also help to make work significantly easier: The Wiha L-key set of the 369R series, made of fully hardened chrome vanadium steel, includes an innovation that will convince everyone. A spring steel ring holds hexagon screws reliably.

- **Simplifies your work**
The ball end facilitates access to screws and allows you to work at an angle of up to 25°.
- **Increases your efficiency**
Wiha MagicRing® retaining function holds all screws firmly in place – without any magnets.
- **Facilitates handling**
Always the correct key when you need it.
- **Saves time**
Ensures order: removing and targeted insertion in the holder is child's play.



L-key set in ErgoStar holder



Simplifies your work: The ball end facilitates access to screws and allows you to work at an angle of up to 25°. **Lowers your costs:** Highly durable thanks to high-quality, chrome-plated L-key surface to prevent corrosion. **Facilitates handling:** Always the correct key when you need it. **Saves time:** Ensures order: removing and targeted insertion in the holder is child's play. **Increases your efficiency:** Wiha MagicRing® holding feature holds all hex screws in place without a magnet.

Hexagonal ball end MagicRing® matt chrome-plated 9-pcs.

369 H9

Order-No.	
37351	5
● 1,5 / 2 / 2,5	
● 3 / 4 / 5 / 6 / 8 / 10	

MagicRing® from size 3 mm. Based on ISO 2936L.

L-key set in Compact holder



Simplifies your work: The ball end facilitates access to screws and allows you to work at an angle of up to 25°. **Lowers your costs:** Highly durable thanks to high-quality, chrome-plated L-key surface to prevent corrosion. **Saves space:** All standard keys organised in a compact, space-saving design.

Hexagonal ball end matt chrome-plated 11-pcs.

369 H11

Order-No.	
36453	5
● 1,5 / 2 / 2,5 / 3 / 4 / 5 / 6 / 7 / 8 / 9 / 10	

Including 7 mm and 9 mm special sizes. Based on ISO 2936L.

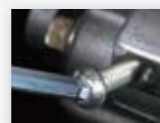
INFOBOX:
Ball end hex



Wiha hexagonal ball end

- The ball end can be rotated by up to 25° in both clockwise and anti-clockwise direction.

INFOBOX:
MagicRing®



Wiha MagicRing®

- Spring steel ring reliably holds hex screws in place
- An innovation, which will benefit each user.



L-key set in Compact holder



Simplifies your work: The ball end facilitates access to screws and allows you to work at an angle of up to 25°. **Lowers your costs:** Highly durable thanks to high-quality, chrome-plated L-key surface to prevent corrosion. **Saves space:** All standard keys organised in a compact, space-saving design.

Hexagonal ball end matt chrome-plated 9-pcs.

369 H9

Order-No.	
01418	5
● 1,5 / 2 / 2,5 / 3 / 4 / 5 / 6 / 8 / 10	

Based on ISO 2936L.

Screw extractor set



Increases your efficiency: Thread-conserving removal of the screw without damage.

Hexagon with spiral drill bit 8-pcs.

405 11

Order-No.	
03988	10
● 2,0 / 2,5 / 3,0 / 4 / 5 / 6 / 8 / 10	

INFOBOX:
MagicSpring®



Wiha TORX® MagicSpring®

- TORX® and TORX PLUS® screws are held securely in place.
- An innovation, which will benefit each user.



L-key set in ErgoStar holder



Simplifies your work: The ball end facilitates access to screws and allows you to work at an angle of up to 25°. **Facilitates handling:** Always the correct key when you need it. **Saves time:** Ensures order: removing and targeted insertion in the holder is child's play.

TORX® ball end black finish 13-pcs.

366BE HZ13

Order-No.	
36487	5
● T5 / T6 / T7 / T8	
● T9 / T10 / T15 / T20 / T25 / T27 / T30 / T40 / T45	

TORX® ball end from size T9

INFOBOX:
TORX® ball end



Wiha TORX® ball end

- With optimised TORX® ball end geometry
- Increased strength thanks to the special cold forming on a system developed by Wiha especially for this purpose.
- Allows fastening and unfastening at angles up to 25°.
- Simple insertion of the tool/bit and fastening/ unfastening, especially in hard-to-reach positions.
- Broad product range: As an L-key, as a bit and as a SoftFinish® screwdriver.



Increases your efficiency

Wiha combination pliers: perfectly adapting to all situations as multiple operations are performed by a single tool.

Protects your health

Wiha pliers are kind to the muscles and ergonomic to work with, permanently reducing wrist strain.

Offers you full protection

Each tool individually tested at 10,000 V AC and approved for 1,000 V AC.

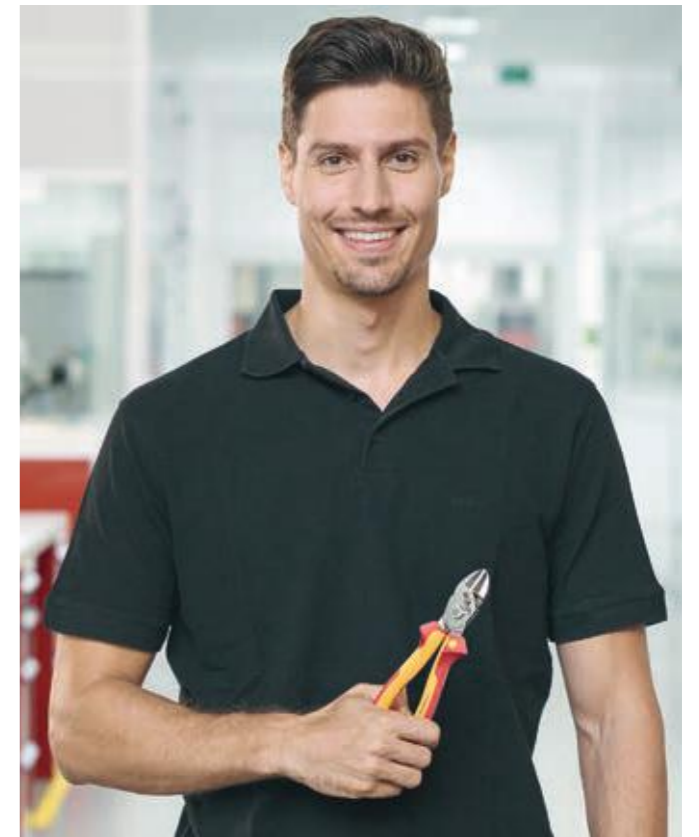
Trimming/ cutting A cut above the rest with Wiha.

A precise cut at the right time – no problem for Wiha diagonal cutters, heavy-duty diagonal cutters, cable cutters, cable shears and combination pliers. With the perfect combination of high-quality materials and ergonomic comfort, Wiha VDE-tools withstand the toughest demands. Production is in accordance to the state-of-the-art quality management guidelines. A special heat treatment and inductive hardening of the parts under high stress ensure a long lifespan. The precise interaction of the joints and the exacting quality workmanship of the blades and gripping surfaces ensure the highest level of functionality.

All Wiha products have been designed according to the latest findings in ergonomics. Ergonomic handles and well thought-out soft and hard zone distribution makes for work that protects the hands from strain and is comfortable.

"With BiCut®, I always have sufficient power when cutting - and without aching fingers."

Timo Schweitzer



Double your power at the push of a button.



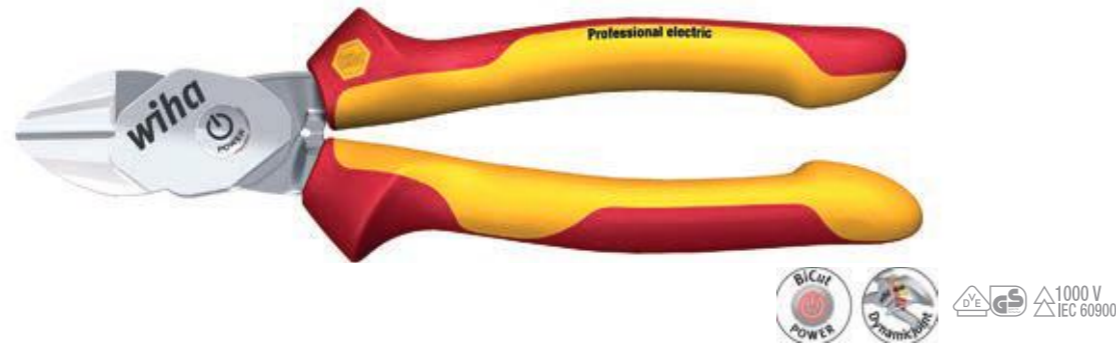
Precise and safe work – at double the power: no problem for the Wiha BiCut® Professional electric diagonal cutters. If there is not enough power when cutting, or if cutting is laborious, a simple push of a button is all that is required and the cutting power is doubled. Another push of the button, and the power is halved again – easy! This significantly reduces the risk of cramp or slippage when applying too much force. The extra-wide back for the handle, with perfectly distributed soft and hard zones, ensures the optimum ergonomics. The new generation of Wiha pliers has already been awarded with the “reddot award 2014winner” for outstanding design quality.

- **Increases your efficiency**
Two pliers in one - 200 % power at the touch of a button, available at any time.
- **Protects your health**
Requires less force and reduces pressure on the wrists.
- **Offers you full protection**
Each tool individually tested at 10,000 V AC and approved for 1,000 V AC.

Doubles the power at the press of a button



BiCut® Professional electric high-performance diagonal cutters with DynamicJoint®



Lowers your costs: Durable thanks to high-quality, chromed plier surface to prevent corrosion. **Protects your health:** Requires less force and reduces pressure on the wrists. **Increases your efficiency:** Two pliers in one - 200 % power at the touch of a button, available at any time. **Offers you full protection:** Each tool individually tested at 10,000 V AC and approved for 1,000 V AC.

switchable Z 18 0 06

Order-No.	mm	II	SB	Ømm		
38191	200	8		21	3	5
38984	200	8	x	21	3	5

Manufactured acc. to IEC 60900:2012.

Combination pliers Professional electric with DynamicJoint® and OptiGrip



Protects your health: Special DynamicJoint® design reduces effort required for cutting. **Increases your efficiency:** A secure, non-slip grip in all standard work situations. **Offers you full protection:** Each tool individually tested at 10,000 V AC and approved for 1,000 V AC.

with extra long cutting edge Z 01 0 06

Order-No.	mm	II	SB	Ømm		
26705	160	6 ½		16	1.6	5
27328	160	6 ½	x	16	1.6	5
26708	180	7		16	1.8	5
27418	180	7	x	16	1.8	5
26711	200	8		17	2	5
27419	200	8	x	17	2	5

DIN ISO 5746. Manufactured acc. to IEC 60900:2012.

High-leverage combination pliers Professional electric with DynamicJoint® and OptiGrip



Simplifies your work: Up to 40% more cutting force thanks to optimised leverage. **Lowers your costs:** Durable thanks to high-quality, chromed plier surface to prevent corrosion. **Protects your health:** Special DynamicJoint® design reduces effort required for cutting. **Increases your efficiency:** A secure, non-slip grip in all standard work situations. **Offers you full protection:** Each tool individually tested at 10,000 V AC and approved for 1,000 V AC.

with extra long cutting edge Z 02 0 06

Order-No.	mm	II	SB	Ømm		
26714	200	8		18	2.3	5
27420	200	8	x	18	2.3	5
26717	225	9		19	2.5	5
27421	225	9	x	19	2.5	5

DIN ISO 5746. Manufactured acc. to IEC 60900:2012.

INFOBOX:
Safety note



- When working with cutting pliers - beware of wire ends flying off. Please wear safety glasses.

INFOBOX:
Cutting capacity info

Rating	Example
1 - 5	copper, aluminium
6 - 10	Iron nails
11 - 15	Spring wire, steel nails
16 - 20	Hardened spring steel

INFOBOX:
OptiGrip



Wiha OptiGrip – optimal grip due to newly designed gripping surfaces

- A firm hold: The „triple-point support“ protects the workpiece from twisting or slipping.
- Highly effective: Optimum grip even with large jaw opening – and at the same time significantly less force needed.
- A wide selection: Now in standard Wiha combination pliers and high leverage combination pliers.

INFOBOX:
DynamicJoint®



Wiha DynamicJoint® – A new dimension in strength and durability

- Innovative: Optimised joint construction.
- Effective: Minimal power loss means less force needed for cutting.
- Permanent: Optimal performance even after thousands of cuts.

Diagonal cutters Professional electric with DynamicJoint®



Lowers your costs: Durable thanks to high-quality, chromed plier surface to prevent corrosion. **Protects your health:** Special Dynamic-Joint® design reduces effort required for cutting. **Offers you full protection:** Each tool individually tested at 10,000 V AC and approved for 1,000 V AC.

Order-No.	mm	mm	SB	mm	mm	mm
26737	140	5 1/2		16	1.4	5
27428	140	5 1/2	x	16	1.4	5
26741	160	6 1/2		16	1.6	5
27429	160	6 1/2	x	16	1.6	5
26744	180	7		17	1.8	5
27430	180	7	x	17	1.8	5

DIN ISO 5749. Manufactured acc. to IEC 60900:2012.

Cable cutter Professional electric



Lowers your costs: Durable thanks to high-quality, chromed plier surface to prevent corrosion. **Increases your efficiency:** Clean work thanks to cable cutting without crushing. **Offers you full protection:** Each tool individually tested at 10,000 V AC and approved for 1,000 V AC.

Order-No.	mm	mm	mm	mm	mm	mm
34743	160	6 1/2	16	50		5
35704	160	6 1/2	16	50	x	5
34744	200	8	20	60		5
35705	200	8	20	60	x	5

Manufactured acc. to IEC 60900:2012.

Combination pliers Professional electric with DynamicJoint® and OptiGrip



Protects your health: Special DynamicJoint® design reduces effort required for cutting. **Increases your efficiency:** A secure, non-slip grip in all standard work situations. **Offers you full protection:** Each tool individually tested at 10,000 V AC and approved for 1,000 V AC.

Order-No.	mm	mm	SB	mm	mm	mm
26705	160	6 1/2		16	1.6	5
27328	160	6 1/2	x	16	1.6	5
26708	180	7		16	1.8	5
27418	180	7	x	16	1.8	5
26711	200	8		17	2	5
27419	200	8	x	17	2	5

DIN ISO 5746. Manufactured acc. to IEC 60900:2012.

Precision mechanic's diagonal cutters Classic



Meets your requirements: For almost flush cutting of soft and semi-hard wires. **Protects your health:** Reduced risk of injury thanks to smooth burr-free finished results, for example with cable ties.

Order-No.	mm	mm	mm	mm	mm
36189	125	5	7	0.8	5

DIN ISO 5749.

Plastic diagonal cutters Classic



Meets your requirements: For the smooth and flush cutting of plastics. **Protects your health:** Reduced risk of injury thanks to smooth burr-free finished results, for example with cable ties.

Order-No.	mm	mm	mm	mm	mm
37402	125	5	2		5
37403	160	6 1/2	3		5

DIN ISO 5743.

Electrical shears



Simplifies your work: Large blade notch and micro-toothed cutting edge prevent the cable from slipping out of the shears. **Increases your safety:** Protective cover with retaining clip for safe carrying. **Facilitates handling:** The combination between a sturdy blade and an ergonomic handle with extra large holes enable users to make a flawless cut into cables up to 50 mm². **Increases your efficiency:** Electrical shears with stripping, skinning, crimping & cutting-to-length functions in a single tool.

Order-No.	mm	mm²	mm
41923	160	50	5

with crimp function in blister pack

Z 71 7 160 06 SB

Craftsman's cutters



Increases your efficiency: Can be used universally thanks to its small and compact form.

Order-No.	mm	mm	mm
29420	145	5 3/4	5

Standard model made of stainless steel

Z 71 5 06

INFOBOX: Safety note

- When working with cutting pliers - beware of wire ends flying off. Please wear safety glasses.





Supplying/ holding

Supplying – completely relaxed.

In the supplying and holding working procedures, Wiha pliers prove to be clever helpers for relaxed and efficient work. For instance, the OptiGrip of the combination and high-leverage combination pliers ensure optimal and secure holding using an innovative gripping surface:

The unique 'triple-point support' protects the work piece from twisting or slipping. The circlip pliers from the Classic Series with their MagicTips® precision tips made of high-performance steel offer considerable additional safety and stability. Their special latching function is especially useful against in preventing the circlips jumping off.

“You only have to lose a circlip, and then you realize the benefits of Wiha pliers!”
Frank Scheck





Increases your efficiency

Wiha gripping pliers enable safe, non-slip gripping in all work situations.

Lowers your costs

With a special fastening feature in their tips, Wiha circlip pliers keep circlips sturdy and firmly in position, preventing damage in the working environment.

Offers you full protection

Each tool individually tested at 10,000 V AC and approved for 1,000 V AC.

Combination pliers Professional electric with DynamicJoint® and OptiGrip



Protects your health: Special DynamicJoint® design reduces effort required for cutting. **Increases your efficiency:** A secure, non-slip grip in all standard work situations. **Offers you full protection:** Each tool individually tested at 10,000 V AC and approved for 1,000 V AC.

with extra long cutting edge

Z 01 0 06

Order-No.	mm	ii	SB	∅mm		
26705	160	6 ½		16	1.6	5
27328	160	6 ½	x	16	1.6	5
26708	180	7		16	1.8	5
27418	180	7	x	16	1.8	5
26711	200	8		17	2	5
27419	200	8	x	17	2	5

DIN ISO 5746. Manufactured acc. to IEC 60900:2012.

High-leverage combination pliers Professional electric with DynamicJoint® and OptiGrip



Simplifies your work: Up to 40% more cutting force thanks to optimised leverage. **Lowers your costs:** Durable thanks to high-quality, chromed plier surface to prevent corrosion. **Protects your health:** Special DynamicJoint® design reduces effort required for cutting. **Increases your efficiency:** A secure, non-slip grip in all standard work situations. **Offers you full protection:** Each tool individually tested at 10,000 V AC and approved for 1,000 V AC.

with extra long cutting edge

Z 02 0 06

Order-No.	mm	ii	SB	∅mm		
26714	200	8		18	2.3	5
27420	200	8	x	18	2.3	5
26717	225	9		19	2.5	5
27421	225	9	x	19	2.5	5

DIN ISO 5746. Manufactured acc. to IEC 60900:2012.

Water pump pliers Professional electric



Meets your requirements: Permanently stable through box joint with double guidance. **Lowers your costs:** Durable thanks to high-quality, chromed plier surface to prevent corrosion. **Increases your efficiency:** Fast and simple adjustment of pliers with push button. **Offers you full protection:** Each tool individually tested at 10,000 V AC and approved for 1,000 V AC.

with push button adjustment

Z 22 0 06

Order-No.	mm	ii	O:	O:	SB	
37450	250	10	2	50		5
38632	250	10	2	50	x	5

DIN ISO 8976. Manufactured acc. to IEC 60900:2012.

Water pump pliers Professional electric



Meets your requirements: Permanently stable through box joint with double guidance. **Lowers your costs:** Durable thanks to high-quality, chromed plier surface to prevent corrosion. **Offers you full protection:** Each tool individually tested at 10,000 V AC and approved for 1,000 V AC.

box type

Z 21 0 06

Order-No.	mm	ii	O:	O:	SB	
33520	250	10	2	50		5
38631	250	10	2	50	x	5

DIN ISO 8976. Manufactured acc. to IEC 60900:2012.

Needle nose pliers Professional electric



Lowers your costs: Durable thanks to high-quality, chromed plier surface to prevent corrosion. **Increases your efficiency:** Extra-long plier head for inserting low-lying components. **Offers you full protection:** Each tool individually tested at 10,000 V AC and approved for 1,000 V AC.

with cutting edge straight shape

Z 05 0 06

Order-No.	mm	II	SB	∅mm	
26720	160	6 ½		1.2	5
27422	160	6 ½	x	1.2	5
26727	200	8		1.6	5
27423	200	8	x	1.6	5

DIN ISO 5745. Manufactured acc. to IEC 60900:2012.

Long flat-nose pliers Professional electric



Increases your efficiency: Extra-long plier head for inserting low-lying components. **Offers you full protection:** Each tool individually tested at 10,000 V AC and approved for 1,000 V AC.

Z 07 0 06

Order-No.	mm	II	SB	
26732	160	6 ½		5
27426	160	6 ½	x	5

DIN ISO 5745. Manufactured acc. to IEC 60900:2012.

Needle nose pliers Professional electric



Lowers your costs: Durable thanks to high-quality, chromed plier surface to prevent corrosion. **Increases your efficiency:** Extra-long plier head for inserting low-lying components. **Offers you full protection:** Each tool individually tested at 10,000 V AC and approved for 1,000 V AC.

with cutting edge curved shape, approx. 40°

Z 05 1 06

Order-No.	mm	II	SB	∅mm	
26728	160	6 ½		1.2	5
27424	160	6 ½	x	1.2	5
26729	200	8		1.6	5
27425	200	8	x	1.6	5

DIN ISO 5745. Manufactured acc. to IEC 60900:2012.

Long round-nose pliers Professional electric

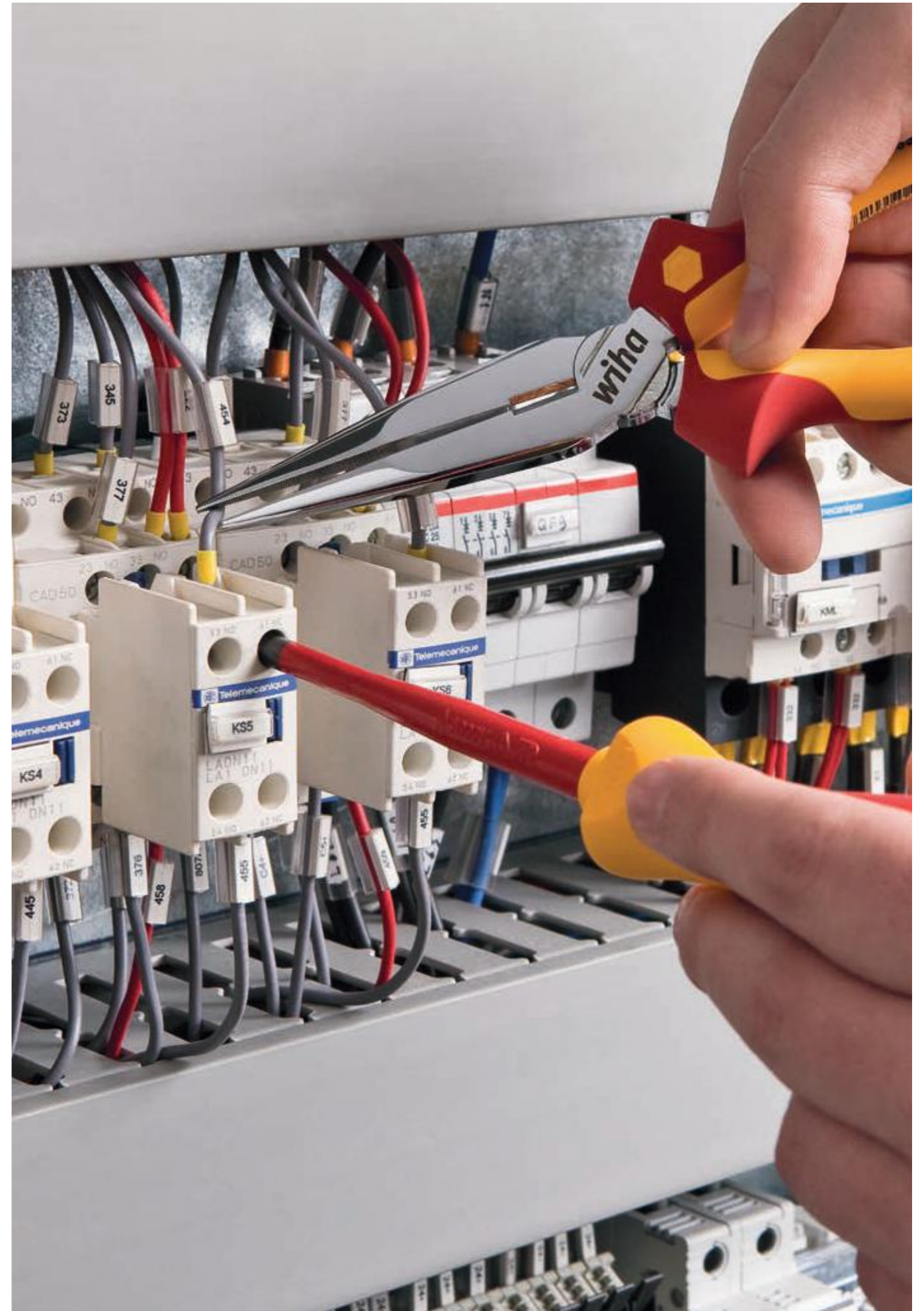


Increases your efficiency: Extra-long plier head for inserting low-lying components. **Offers you full protection:** Each tool individually tested at 10,000 V AC and approved for 1,000 V AC.

Z 09 0 06

Order-No.	mm	II	SB	
26735	160	6 ½		5
27427	160	6 ½	x	5

DIN ISO 5745. Manufactured acc. to IEC 60900:2012.



For those situations where a good grip is essential.



They make our circlip pliers for the Classic series head and shoulders above the rest: MagicTips®, the precision tips made of high-performance steel. Additionally hardened, they offer a high level of resistance to wear and therefore ensure a long shelf-life. The special latching feature is as unique as it is useful, and prevents jumping of the circlips - and therefore any reworking in the motor or working space caused by lost circlips. And thanks to the non-slip pliers handle, precise work is also guaranteed in unfavourable situations. Hard as nails, durable, safe, accurate: These qualities make Wiha MagicTips® circlip pliers useful and indispensable helpers during day-to-day work.

- **Lowers your costs**
Prevents damage caused by lost circlips in the work area.
- **Saves time**
Safe and sturdy grip on circlips.



Pliers set Classic with MagicTips®



Lowers your costs: Prevents damage caused by lost circlips in the work area. **Saves time:** Safe and sturdy grip on circlips.

Circlip pliers 4-pcs.

Z 99 0 007 01

34708

1

Supplying/ holding

○ Circlip pliers Classic with MagicTips® for inner rings (holes), straight J 1, 140mm (34689) / J 2, 180 mm (34690)

⊖ Circlip pliers Classic with MagicTips® for outer rings (shafts), straight A 1, 140mm (34699) / A 2, 185 mm (34700)

• with safety latching function

**INFOBOX:
MagicTips®**



Wiha MagicTips® – Top of their class.

- Maximum grip: The special latching function preventing jumping away of the safety rings makes the Wiha circlip pliers truly unique.
- Hard as steel: Additional hardening of tips means high wear resistance and therefore excellent durability.
- Precise: Precision tips of high performance steel for maximum grip and high stability.



Circlip pliers Classic with MagicTips®



Lowers your costs: Prevents damage caused by lost circlips in the work area. **Saves time:** Safe and sturdy grip on circlips.

○ for inner rings (holes), straight

Z 33 4 01

Order-No.	Typ	mm	II	⊖	SB	☑
34688	J 0	140	5 ½	8-13		5
36975	J 0	140	5 ½	8-13	x	5
34689	J 1	140	5 ½	12-25		5
36225	J 1	140	5 ½	12-25	x	5
34690	J 2•	180	7	19-60		5
36222	J 2•	180	7	19-60	x	5
34691	J 3•	220	9	40-100		5
36272	J 3•	220	9	40-100	x	5
34692	J 4•	305	12	85-140		5

• with safety latching function
DIN ISO 5256.

○ for inner rings (holes) with angled shape

Z 33 5 01

Order-No.	Typ	mm	II	⊖	SB	☑
34693	J 01	140	5 ½	8-13		5
36976	J 01	140	5 ½	8-13	x	5
34694	J 11	140	5 ½	12-25		5
36223	J 11	140	5 ½	12-25	x	5
34695	J 21•	180	7	19-60		5
36224	J 21•	180	7	19-60	x	5
34696	J 31•	220	9	40-100		5
36226	J 31•	220	9	40-100	x	5
34697	J 41•	305	12	85-140		5

• with safety latching function
DIN ISO 5256.

⊖ for outer rings (shafts), straight

Z 34 4 01

Order-No.	Typ	mm	II	⊖	SB	☑
34698	A 0	140	5 ½	7-10		5
36977	A 0	140	5 ½	7-10	x	5
34699	A 1	140	5 ½	10-25		5
36978	A 1	140	5 ½	10-25	x	5
34700	A 2•	185	7	19-60		5
36220	A 2•	185	7	19-60	x	5
34701	A 3•	240	9	40-100		5
36219	A 3•	240	9	40-100	x	5
34702	A 4•	300	12	85-140		5

• with safety latching function
DIN ISO 5254.

⊖ for outer rings (shafts), angled

Z 34 5 01

Order-No.	Typ	mm	II	⊖	SB	☑
34703	A 01	140	5 ½	7-10		5
36979	A 01	140	5 ½	7-10	x	5
34704	A 11	140	5 ½	10-25		5
36980	A 11	140	5 ½	10-25	x	1
34705	A 21•	185	7	19-60		5
36218	A 21•	185	7	19-60	x	1
34706	A 31•	240	9	40-100		5
36221	A 31•	240	9	40-100	x	5
34707	A 41•	300	12	85-140		5

• with safety latching function
DIN ISO 5254.



Protects your health

Wiha pliers are kind to the muscles and ergonomic to work with, permanently reducing wrist strain.

Lowers your costs

Thanks to the integration and combination of several operations in one tool, this removes the need for several tools.

Offers you full protection

Each tool individually tested at 10,000 V AC and approved for 1,000 V AC.

Stripping/ insulating/ crimping For tidy cable ends.

It is particularly important to have an exacting, process-reliable approach when crimping to prevent fiddly wire-end sleeves snagging or twisting all the time. Wiha crimping tools guarantee a clean, precise crimping of components. The worker's pressure force is automatically adjusted. Only slight hand strength is required thanks to optimum transmission. The different interchangeable crimping inserts provide for all normal wire-end sleeves. These tools are suitable for handling a whole variety of components, from cable eyes and contacts through to male blade connectors. The automatic electric crimping pliers particularly impress with a feed and automatic adjustment to the wire-end sleeve size. Hexagonal crimping prevents wire-end sleeves from twisting in the pliers.

"The automatic crimping pliers allow me to do my work much more quickly without the fiddly wire-end sleeves snagging or twisting all the time."

Ralf Flaig

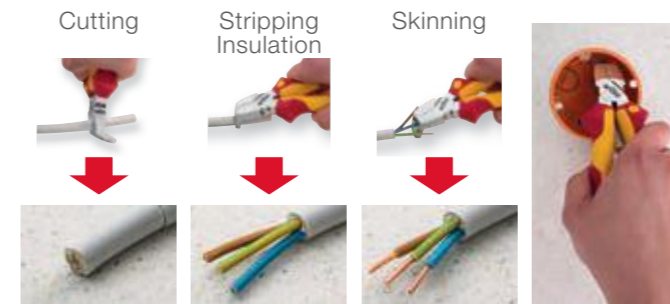


Stripping/ insulating/
crimping

Three functions – one tool.



Less tools means less weight, better handling and more efficient work. The Wiha Professional electric TriCut installation pliers combine three tools in one, ideal for the three operations cutting-to-length, stripping and skinning. And it does all this while saving you energy: Due to an ergonomically shaped, specifically angled plier head forged from high-quality steel. The low-wear, inlaid joint with heavy-duty riveting makes the pliers particularly robust and durable, and production and testing according to IEC 60900, VDE/GS certification and individual piece testing at 10,000 V AC ensures uncompromising safety.



- **Simplifies your work**

The angled shape of the head allows work to be performed in hard-to-reach spaces such as installation boxes.

- **Increases your efficiency**

Three tools in one. Saves 60% volume and 50% less weight for 100% efficiency.

- **Lowers your costs**

Now you only need one tool for three tasks: cutting to length, stripping and skinning.

- **Offers you full protection**

Each tool individually tested at 10,000 V AC and approved for 1,000 V AC.



Installation pliers TriCut Professional electric



Simplifies your work: The angled head allows you to work in hard-to-reach places such as installation sockets. **Lowers your costs:** Now you only need one tool for three tasks: cutting to length, stripping and skinning. **Increases your efficiency:** Three tools in one. Saves 60% volume and 50% less weight for 100% efficiency. **Offers you full protection:** Each tool individually tested at 10,000 V AC and approved for 1,000 V AC.

Z 14 1 06

Order-No.	mm	II	SB	Ømm	
38552	170	7		13	1.6
38853	170	7	x	13	1.6

Manufactured acc. to IEC 60900:2012.

Stripping diagonal cutters Professional electric with DynamicJoint®



Lowers your costs: Durable thanks to high-quality, chromed plier surface to prevent corrosion. **Saves money:** Two tools in one for cutting to length and skinning. **Protects your health:** Special DynamicJoint® design reduces effort required for cutting. **Offers you full protection:** Each tool individually tested at 10,000 V AC and approved for 1,000 V AC.

Z 14 0 06

Order-No.	mm	II	SB	Ømm	
26745	160	6 ½		13	1.6
27431	160	6 ½	x	13	1.6

DIN ISO 5749. Manufactured acc. to IEC 60900:2012.

Stripping pliers Professional electric



Lowers your costs: Durable thanks to high-quality, chromed plier surface to prevent corrosion. **Protects your health:** Reduces strain from continuous work thanks to opening spring. **Increases your efficiency:** Skinning of several cross-sections due to wide variety of settings. **Offers you full protection:** Each tool individually tested at 10,000 V AC and approved for 1,000 V AC.

Z 55 0 06

Order-No.	mm	II	Ø	mm²	SB	
26847	160	6 ½	5	10		5
27437	160	6 ½	5	10	x	5

DIN ISO 5743. Manufactured acc. to IEC 60900:2012.

Needle nose pliers Inomic® VDE



Saves money: Two tools in one for cutting to length and skinning. **Protects your health:** Ergonomic handling enables users to work longer whilst protecting muscles. **Offers you full protection:** Each tool individually tested at 10,000 V AC and approved for 1,000 V AC.

Z 06 0 16

Order-No.	Typ	Ø	
33259	160	12	1,6

Manufactured acc. to IEC 60900:2012.

Stripping tool



Simplifies your work: Perfect handling thanks to ergonomic handle shape. **Saves time:** Automatic setting from round to length cutting. **Increases your efficiency:** Skinning of all standard cross-sections through continuous setting.

246 22 02

Order-No.	mm	II	Ømm	SB	
35969	165	6 ½	4,0-28		1

Stripping tool



Simplifies your work: Enables stripping in hard-to-reach places such as installation sockets.

246 77 SB

Order-No.	mm	II	mm²	SB	
36052	125	5	8-13	x	1

Cable stripping knife



Offers you full protection: Each tool individually tested at 10,000 V AC and approved for 1,000 V AC.

246 80 SB

Order-No.	mm	II	SB	
38798	200	8	x	1

Manufactured acc. to IEC 60900:2012.

Cable stripping knife



Lowers your costs: No damage to wire insulation through sliding shoe on tip.

246 78 SB

Order-No.	mm	II	SB	
36053	200	8	x	1

Manufactured acc. to IEC 60900:2012.

Stripping tool



Simplifies your work: Enables incremental cable stripping and skinning in hard-to-reach places such as installation sockets.

246 76 SB

Order-No.	mm	II	mm²	SB	
36051	110	4 ¼	4,8-7,5	x	1

Stripping tool automatic



Lowers your costs: Long-lasting and robust thanks to metal blade insert. **Protects your health:** Damper enclosed for large cable cross-sections to reduce recoil and protect wrists. **Saves time:** Blades quickly exchanged by immediately available replacement blades in the handle. **Increases your efficiency:** Automatic stripping pliers for a wide range of cables between 0.03 and 16 mm².

up to 16 mm² in blister pack

Z 57 0 06

Order-No.	AWG	mm ²	SB	
42062	32-5	0,03 - 16	x	1

Stripping tool automatic



Simplifies your work: Unrestricted access to hard-to-reach work areas thanks to extremely slim handle shape. **Saves money:** Two tools in one for cutting to length and skinning. **Increases your efficiency:** Damage-free stripping thanks to automatic adjustment to cable diameter.

up to 6 mm² in blister pack

Z 46 75 SB

Order-No.	mm	mm	mm ²	AWG	SB	
36050	190	7 1/2	0,2-6,0	24-10	x	1

Automatic crimp tool



Lowers your costs: An integrated lever enables users to interrupt the crimping process at any time to protect the pliers. **Increases your safety:** Safe work through feed aid prevents crimping the plastic cover of wire-end sleeves. **Facilitates handling:** Thanks to hexagonal crimping, small wire-end sleeves no longer get caught. **Increases your efficiency:** Automatic adjustment of wire-end sleeve size with suitable crimping force for a large coverage area of 0.08-16mm².

for wire-end sleeves hex crimping

Z 62 0 005 06 SB

Order-No.	mm	mm ²	AWG	SB	
41246	210	0,08-16	28-5	x	1

For processing twin sleeves and wire-end sleeves with or without insulating collar as per DIN 46228 & EN 50027

Crimp tool



Increases your safety: Safe working through automatic pressing adjustment. **Increases your efficiency:** Covers all standard wire-end sleeves thanks to replaceable crimping inserts.

for wire-end sleeves

Z 62 0 001 06

Order-No.	mm	mm ²	AWG	
33844	220	0,14-10	26-8	1
40342	220	0,14-10	26-8	1

For processing of wire-end sleeves with and without isolating collar according to DIN 46228, EN 50027.

Crimp tool



Increases your safety: Safe working through automatic pressing adjustment.

for insulated cable eyes and contacts

Z 62 0 002 06

Order-No.	mm	mm ²	AWG	
33841	220	0,5-6	20-10	1

For processing of red, blue and yellow isolated cable eyes, pin-end cable connectors, contact pins, contact pin sleeves, circular pins, circular pin sleeves, batch connectors and parallel connectors according to DIN 46234.

Crimp tool



Increases your safety: Safe working through automatic pressing adjustment.

for non-insulated cable eye with closed sleeve

Z 62 0 004 06

Order-No.	mm	mm ²	AWG	
33843	220	0,1-16	26-6	1

For processing of non-isolated contact pins and contact pin sleeves according to DIN 46247 for standardised, solderless electrical connections.

Crimp tool



Increases your safety: Safe working through automatic pressing adjustment.

for non-insulated male blade connectors

Z 62 0 003 06

Order-No.	mm	mm ²	AWG	
33842	220	0,25-6	22-10	1

For processing of non-isolated contact pins and contact pin sleeves according to DIN 46247 for standardised, solderless electrical connections.

Crimping pliers Professional electric



Meets your requirements: Safe pressing in marked trapezoidal/semi-circular profiles. **Lowers your costs:** Durable thanks to high-quality, chromed plier surface to prevent corrosion. **Offers you full protection:** Each tool individually tested at 10,000 V AC and approved for 1,000 V AC.

Z 60 0 06

Order-No.	mm	mm	mm ²	SB	
35861	145	5 3/4	0,25-2,5		5
38985	145	5 3/4	0,25-2,5	x	5

35862	180	7	0,25-16		5
38986	180	7	0,25-16	x	5

DIN ISO 5743. Manufactured acc. to IEC 60900:2012.



Simplifies your work

Torch with integrated laser makes it easier to fix positions more precisely and project measurements for ceiling installations, for example. Perfect light positioning thanks to lamp head swivelling in an L shape.

Increases your efficiency

Wiha spirit level with both bubbles perfectly visible, even from a sharp angle.

Saves space

Perfectly portable; fits into Wiha cases.

Surveying/ marking/ measuring/ checking

This is what we call precision work made to measure.

Wiha measurement and testing devices prove to be dependable helpers during electrical installation work. The multi-functional torch impresses in three ways thanks to its integrated laser, UV light and LED light with two lighting levels. With variable distance marks, the Wiha electrician's spirit level can reach across up to four flush boxes. Thanks to its ingeniously positioned scale, it allows users to make measurements effortlessly from different work positions. Users are guaranteed to see bubbles perfectly, even from a sharp angle. The Wiha electrician's folding ruler provides a scale for up to three flush boxes and edge distance marking at 150 mm. It can also be used to route cables into hard-to-reach installation locations. With its florescent coating, the folding ruler is also quick and easy to find in the dark with a UV light.

"The Wiha spirit level is a big hit! I can see the bubbles perfectly even when taking measurements above my head. I can also mark out measurements without needing to take a break."

Ralf Kästle





Even the most experienced professional tradesmen find it difficult to work efficiently in poorly lit work environments. The Wiha multi-functional torch sheds light on things in three ways: It features an integrated laser, UV light and LED light with two lighting levels. It is thus a compact, universal work tool which replaces several instruments in a single device. The integrated laser offers a great advantage, providing detailed positioning and easy transmission of measurements for tasks such as ceiling installations. This torch is even more practical for portable use thanks to the retaining clip, magnetic positioning and swivelling lamp head used to point the light in the required direction. Compact, light and multi-functional, the Wiha torch ensures optimum illumination for perfect vision and positioning.

- **Simplifies your work**
Retaining clip and magnetic positioner on the lid allows you to keep hands free for other tasks.
- **Simplifies your work**
Integrated laser makes it easier to fix position more precisely and project measurements for ceiling installations, for example. Perfect light positioning thanks to lamp head swivelling in an L shape.
- **Increases your efficiency**
Very strong LED lamp – two light intensities to adjust to light conditions as required. Includes laser and UV light.
- **Increases your safety**
Power-on time of 2 seconds prevents the laser being activated by accident.



Flashlight with LED, laser and UV light



Simplifies your work: Retaining clip and magnetic positioner on the lid allows you to keep hands free for other tasks. Integrated laser makes it easier to fix position more precisely and project measurements for ceiling installations, for example. Perfect light positioning thanks to lamp head swivelling in an L shape. **Increases your safety:** Power-on time of 2 seconds prevents the laser being activated by accident. **Increases your efficiency:** Very strong LED lamp – two light intensities to adjust to light conditions as required. Includes laser and UV light.

in blister pack, including 3 AAA batteries

SB 246 70

Order-No.	LED	☼	UV	SB	
41286	100 / 280 lumen	Class 2	300 - 400 mW	x	5



Torque QuickCheck torque testing device



Increases your safety: Checking your torque tool regularly guarantees safe, precise work with the correct torque. **Saves time:** LED traffic light system displays results in a way which is quick and easy to understand. **Increases your efficiency:** Fast, easy checking of your torque tool thanks to mobile, compact shape.

with adapter blades and batteries in box

290

Order-No.	Nm	⚡ %	SB	
42086	2,8	2	x	1



Surveying/ marking/
measuring/ checking

Voltage tester Volt Detector non-contact, single-pole, 230-1,000 VAC



Simplifies your work: Voltage tester operational at all times through automatic activation. **Increases your efficiency:** Fast voltage testing thanks to non-contact measurement within a field of 4mm.

255-12

Order-No.	●	↔	↔
37871	4,2	149	10
IEC 61010-1			

Voltage tester SoftFinish® single-pole, 110-250 volts



Increases your efficiency: Stable and as robust as a fully-fledged screwdriver. **Offers you full protection:** Each tool individually tested at 10,000 V AC and approved for 1,000 V AC.

255-11

Order-No.	⊖	↔	⊖	↔	↔	↔
34745	3,0	60	0,5	140	19	10
Tested according to DIN 57680-6, GS, CE compliant.						

INFOBOX:
Volt Detector



Testing pen for AC voltages.

- Testing pen detects AC voltages of up to 230 V AC
- A bright red LED indicates AC voltages
- A current flow through the user's body is not necessary
- Complies with IEC 61010-1 safety standard: Measuring category CAT III 1,000 V
- Detects AC voltages within a field of 4 mm.
- CE compliant

Electrician's Longlife® folding ruler, 2 m



Simplifies your work: Integrated with cable retractor for cables between 3-7mm. **Lowers your costs:** Ruler quick and easy to find – even in dark environments with a UV light. **Increases your efficiency:** Ruler with integrated distance marks for up to 3 flush boxes.

metric, 10 segments

4102008

Order-No.	↔	↔	↔
42068	15	orange	10

Folding ruler LongLife Plus Composite 2 m



metric, 10 segments

410 2005

Order-No.	↔	↔	↔
37067	15	red/ black	10
37309	15	grey/ white	10

Electrician's spirit level

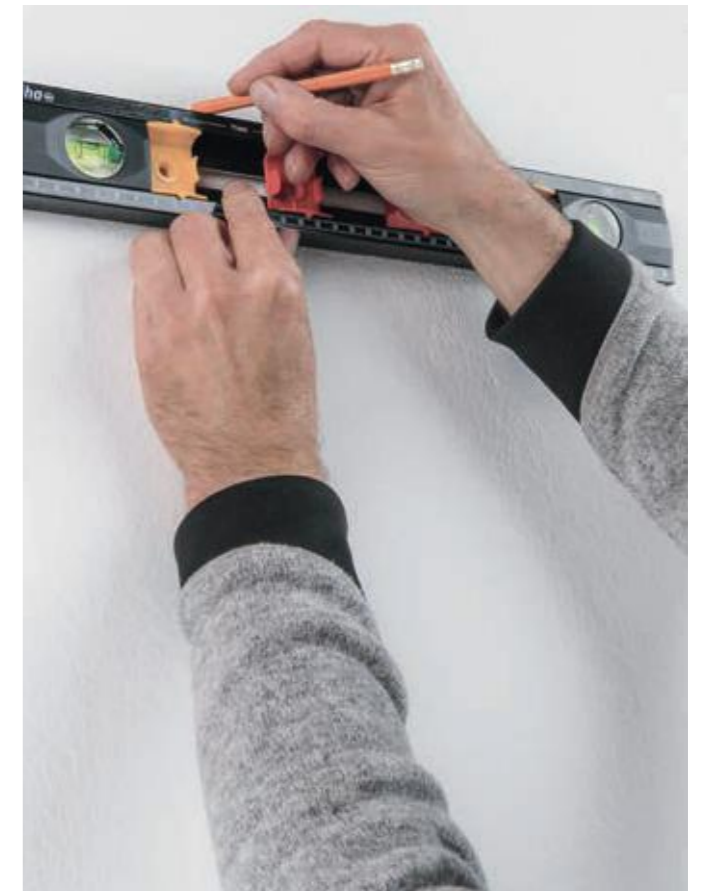


Simplifies your work: Comfortable measurement in different work positions thanks to the ingeniously positioned scales, even when viewed from above. **Saves space:** Perfectly portable; fits into Wiha cases. **Saves time:** Variable distance marks for up to 4 flush boxes. **Increases your efficiency:** Both bubbles can be seen easily even from an acute angle.

40 cm

246

Order-No.	↔	↔
42074	400	10



Surveying/
marking/
measuring/
checking

Striking

Optimum power transmission.

Specially tailored for use by electricians: Wiha impact tools. With optimally uniform weight distribution, the Wiha electric hammer strikes a perfect balance and is also eminently suitable for use in confined working environments. Its flat claws allow you to remove nails and nail clamps easily. The flat surface on the hammer handle ensures cables and dowels are fitted into position without causing any damage to the cable duct or plasterboard. Wiha's scaled impact screwdriver blade ensures that the portable dowel racket makes a perfectly dimensioned dowel hole to the required depth anywhere at any time and without making a mess, unlike power tools. The galvanic separation between the blade and solid steel cap ensures that the user is always protected, even if they accidentally hit a live wire.

Increases your efficiency

Electrician's hammer offers perfect balance thanks to optimum weight distribution for effective handling.

Saves time

Dowel racket allows you to make dowel holes with the strike of a hammer anywhere at any time, even near power sockets.

Increases the quality of your work

The flat surface on the hammer handle ensures cables and dowels are fitted into position without causing any damage.

"Fits nicely into the hand and can be used in a variety of ways. It's now a permanent fixture in my toolbox!"

Andreas Ebener





Thanks to its optimum balance, the electrician's hammer is perfectly sized in the hand while also providing a secure hold when hammering thanks to the ergonomically shaped hammer handle. With its U-shaped impact surface, the Wiha electrician's hammer delivers the optimum solution to working in corners and confined spaces. You can quickly and easily remove nails and nail clamps from walls with the flat claws on the hammer head. The flat surface on the hammer handle means cables and dowels are positioned effectively without causing any damage to the wall.

- **Simplifies your work**
Flat claws allow you to remove nails and nail clamps easily.
- **Increases your efficiency**
Perfect balance thanks to optimum weight distribution for effective handling.
- **Improves access**
Perfectly suited for use in confined working environments thanks to the combination of a square and round head shape.
- **Increases the quality of your work**
The flat surface on the hammer handle ensures cables and dowels are fitted into position without causing any damage.



SoftFinish® dowel racket set with dowels



Simplifies your work: Dirt- and dust-free work compared to when machines are used. **Increases your safety:** Galvanic separation in the handle prevents a discharge between the striking cap and the blade. **Protects your health:** Dowel hole can be made anywhere using a hammer at any time, even near power sockets. **Saves time:** Hammer dowel holes anywhere at any time without worrying how near you are to wall sockets. **Increases your efficiency:** Scaled impact screwdriver blade provides more detailed depth measurement. Perfectly dimensioned dowel hole thanks to blade adjusted to required size.

⊕ Phillips with 6 mm round blade in blister pack, 5-pcs.

SB 534S5

Order-No.	Ø mm		
41289	1 x PH2 x 100	6	1

Electrician's hammer



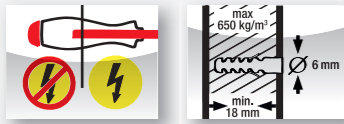
Simplifies your work: Flat claws allow you to remove nails and nail clamps easily. **Increases your efficiency:** Perfect balance thanks to optimum weight distribution for effective handling. **Improves access:** Perfectly suited for use in confined working environments thanks to the combination of a square and round head shape. **Increases the quality of your work:** The flat surface on the hammer handle ensures cables and dowels are fitted into position without causing any damage.

300 g in blister pack

846

Order-No.					
42071	23,9	283	500		4

INFOBOX: Dowel racket



- Galvanic separation in the handle prevents a discharge between the striking cap and the blade.
- Dirt- and dust-free work compared to when machines are used.
- Dowel hole can be made anywhere using a hammer at any time, even near power sockets.

Subject to technical changes.

All illustrations and graphics, specified dimensions and values and references to standards, e.g. DIN/EN, are non-binding. Any liability claims based on this will therefore be rejected. No liability claims will be accepted for printing errors and mistakes which have occurred during the production of the catalogue.

All property rights to the catalogue held by Wiha Werkzeuge GmbH are reserved. The printing or copying of the texts and illustrations contained in this catalogue or its design is prohibited.

Our General Terms and Conditions (Terms of Sale, Delivery and Payment) apply.

TORX®, TORX PLUS®= Registered Trademarks of ACUMENT Global Technologies B.V.

ACR/AOT, Tri-Wing®, Torq-Set®= Registered Trademarks of Phillips Screw Company

Pozidriv= Registered Trademark of European Industrial Services Ltd.

Protective measures

For all work on or near live parts, use the following required for the respective work

- skinning personal safety equipment,
- skinning safety equipment and insulated tools

Work should generally not be carried out on live active parts of electrical systems and electrical equipment. As a result, the electrical power should be switched off before starting work and this statement must be ensured for the duration of the work. This is done by complying with the five safety rules.

Before beginning work:

- isolate
- protect against being switched on again
- check no voltage is present
- earth and short-circuit
- cover or block access to neighbouring live parts.

Wiha list of order numbers

Order-No.	Order-No.	Order-No.	Order-No.
00...	00846 50	01811 58	06638 61
00684 57	00847 50	01812 58	06639 61
00685 57	00848 50	01913 58	06888 59
00686 57	00849 50	03...	06889 58
00687 57	00850 50	03223 56	20...
00689 57	00853 51	03224 56	20218 60
00690 57	00855 51	03225 56	20219 60
00691 57	00856 51	03226 56	20220 60
00692 57	00857 51	03228 56	20221 60
00694 57	00858 51	03230 56	20222 60
00695 57	00859 51	03231 56	20223 60
00696 57	00860 51	03232 56	20224 60
00697 57	00861 51	03237 56	21...
00698 57	00862 51	03238 56	21045 60
00700 57	00863 51	03239 56	21047 60
00701 57	00864 51	03245 56	22...
00702 57	00865 51	03246 56	22509 59
00703 57	00866 51	03247 56	22510 59
00704 57	00867 51	03760 50	22511 59
00706 57	00868 51	03761 50	22512 58
00707 57	00877 50	03762 50	23...
00708 57	00878 50	03988 73	23145 61
00709 57	00879 50	04...	23147 61
00711 57	00880 50	04009 59	23149 61
00712 57	00881 50	04010 59	23151 61
00713 57	00882 50	04059 58	23195 60
00819 50	01...	04126 59	23197 60
00820 50	01418 73	04127 59	23199 60
00821 50	01790 58	04176 58	23201 60
00822 50	01791 58	04194 61	23203 60
00823 50	01792 58	04195 61	23205 60
00824 50	01793 58	04196 61	23207 60
00825 50	01794 58	04197 61	23209 60
00826 50	01795 58	04198 61	23211 60
00827 50	01796 58	05...	23213 59
00828 50	01798 58	05301 61	23215 59
00829 50	01799 58	05302 61	23217 59
00830 50	01800 58	05303 61	23219 59
00831 50	01803 59	05799 58	23221 58
00832 50	01805 59	05800 59	23223 58
00833 49	01808 58	06...	23225 58
00834 49	01809 58	06637 61	23226 58

Order-No.	Order-No.	Order-No.	Order-No.
23227 58	26864 30	29417 67	32410 59
23228 58	26931 57	29420 81	32411 59
24...	27...	29466 51	32412 59
24867 60	27328 79	30...	32413 59
25...	27328 80	30361 50	32414 59
25477 49	27328 85	30362 50	32415 59
25553 60	27418 79	30363 50	32416 59
25739 61	27418 80	30364 50	32417 59
25740 61	27418 85	30365 50	32418 59
25741 61	27419 79	30366 50	32419 59
25742 61	27419 80	30700 50	32421 59
26...	27419 85	30701 50	32423 59
26000 60	27420 79	31...	32477 58
26002 60	27420 85	31863 50	32486 60
26625 30	27421 79	31957 58	32490 59
26626 30	27421 85	31958 58	32491 59
26627 30	27422 86	31959 58	32492 59
26705 79	27423 86	31960 59	32493 59
26705 80	27424 86	31961 59	32494 59
26705 85	27425 86	31962 59	32495 59
26708 79	27426 86	31973 60	32496 59
26708 80	27427 86	31975 60	32497 59
26708 85	27428 80	31977 60	32686 59
26711 79	27429 80	32...	32687 59
26711 80	27430 80	32105 59	32688 59
26711 85	27431 96	32299 60	32689 59
26714 79	27437 96	32302 60	33...
26714 85	27753 57	32303 60	33179 22
26717 79	27754 57	32304 60	33181 21
26717 85	27755 57	32305 60	33182 22
26720 86	27928 53	32306 60	33183 22
26727 86	27929 53	32307 60	33184 21
26728 86	27930 53	32308 60	33259 97
26729 86	27931 53	32309 60	33520 85
26732 86	27932 53	32310 68	33703 59
26735 86	27933 53	32383 57	33704 59
26737 80	27934 53	32384 57	33705 59
26741 80	27935 53	32396 50	33706 58
26744 80	28...	32397 50	33707 58
26745 96	28481 60	32399 57	33708 58
26755 17	29...	32400 57	33709 60
26847 96	29416 67	32409 59	33710 60

Wiha list of order numbers

Order-No.	Order-No.	Order-No.	Order-No.
33711	33961	34589	35506
33712	33962	34590	35506
33713	33963	34590	35507
33714	33964	34688	35507
33715	33965	34689	35508
33716	33966	34690	35508
33717	33969	34691	35509
33718	34...	34692	35509
33719	34306	34693	35510
33720	34452	34694	35510
33721	34453	34695	35511
33722	34454	34696	35511
33723	34455	34697	35704
33724	34456	34698	35705
33725	34457	34699	35861
33726	34554	34700	35862
33727	34555	34701	35870
33728	34556	34702	35969
33729	34557	34703	36...
33730	34558	34704	36050
33731	34559	34705	36051
33732	34560	34706	36052
33736	34577	34707	36053
33743	34578	34708	36071
33764	34578	34743	36071
33841	34579	34744	36088
33842	34579	34745	36088
33843	34580	35...	36089
33844	34580	35389	36089
33920	34581	35390	36090
33921	34581	35391	36090
33922	34582	35392	36092
33923	34582	35393	36093
33924	34583	35394	36094
33925	34583	35395	36114
33926	34584	35396	36189
33927	34584	35446	36218
33928	34585	35456	36219
33929	34585	35457	36220
33930	34586	35501	36221
33931	34586	35504	36222
33932	34589	35505	36223

Order-No.	Order-No.	Order-No.	Order-No.
36224	36667	37224	39...
36225	36668	37224	39029
36226	36669	37225	39037
36272	36670	37225	39039
36327	36671	37226	39040
36329	36672	37226	39041
36330	36673	37227	39045
36389	36674	37227	39076
36453	36675	37309	39078
36455	36676	37351	39124
36487	36677	37402	39134
36536	36678	37403	39178
36537	36679	37450	39179
36538	36680	37871	39180
36539	36681	38...	39181
36540	36682	38020	39182
36541	36683	38074	39183
36542	36684	38191	39184
36543	36685	38362	39185
36544	36686	38370	39186
36558	36687	38371	39187
36586	36688	38372	39188
36639	36689	38552	39189
36640	36690	38601	39190
36641	36691	38631	39191
36642	36692	38632	39192
36643	36791	38798	39193
36644	36975	38853	39194
36645	36976	38874	39195
36646	36977	38875	39196
36647	36978	38876	39197
36648	36979	38877	39198
36649	36980	38878	39199
36650	37...	38879	39200
36659	37067	38880	39201
36660	37137	38881	39202
36661	37147	38984	39203
36662	37147	38985	39204
36663	37222	38986	39206
36664	37222	38996	39207
36665	37223	38997	39208
36666	37223	38997	40...

Wiha list of order numbers

Order-No.		Order-No.	
40282	20	41828	67
40342	98	41829	67
40523	15	41830	65
40674	29	41831	65
40948	19	41832	66
41...		41833	66
41003	46	41834	66
41141	48	41923	81
41142	48	42...	
41143	48	42062	98
41144	48	42068	106
41145	48	42069	13
41146	48	42071	112
41147	48	42074	107
41157	38	42086	105
41159	34	42086	33
41159	42	42098	64
41160	34	42099	64
41160	42	42114	64
41223	20	42115	64
41230	41	42116	64
41231	39	42117	64
41232	40	42118	64
41233	40	42135	64
41234	38	42136	64
41245	48	42137	65
41246	98	42138	65
41286	104	42139	65
41289	112		
41341	31		
41342	31		
41343	31		
41344	31		
41345	31		
41476	31		
41477	31		
41478	31		
41479	31		
41824	66		
41825	66		
41826	66		
41827	67		

The cutting capacities for our pliers.

Hard wire Screws, wire rope, wire basket, electric rails					Hardened spring steel Springs, hardened pins, chains					
11	12	13	14	15	16	17	18	19	20	21
		TriCut installation pliers						BiCut® diagonal cutters 100%		200%
		Electrician's diagonal cutters						High-leverage combination pliers		
Inomic® needle nose pliers					Combination pliers					
					Diagonal cutters					
							Diagonal cutters			
								Needle nose pliers		
								Bent needle nose pliers		

INFOBOX:
Cutting capacity info

Rating	Example
1 - 5	copper, aluminium
6 - 10	Iron nails
11 - 15	Spring wire, steel nails
16 - 20	Hardened spring steel

Legend

Drives

- Triangular nut
- Hex
- Square nut
- Hexagon socket
- Internal hexagon with drill hole (tamper-resistant)
- Tamper Resistant hex
- Square
- IPR (TORX PLUS Security)
- Countersink
- Combination drill bit
- Pentalobe PL
- Phillips PH (cross-recessed)
- Pozidriv PZ (Phillips)
- Robertson
- Round tip
- Slotted
- Slotted nut
- SIT
- Spanner
- Twist drill
- Sliding sleeve
- Torq-Set
- TORX
- TORX with drill hole (tamper-resistant)
- TORX PLUS
- TORX IPR
- Tri-Wing
- Multitooth
- Square reaming blade

Drives

- Square nut
- G7 drive system
- Threaded connector
- SDS-Plus
- Hex

Screwdrivers [mm]

- Cut width
- Tip width
- Round blade dimension
- Hex blade
- Hex bolster
- Scraper width
- Clip opening
- Tip width
- Small head diameter
- Interchangeable blade length
- Reversible blade length
- Adapter blade length
- Bitholder length
- Blade length
- Length
- Handle diameter
- Blade length
- Shaft lengths
- Length
- Handle length
- Handle diameter
- Topra handle length
- Topra handle width
- Torque T-handle length
- Torque T-handle width
- Max. torque value [Nm]
- Max. torque value [in.lbs]
- Accuracy in percent
- Cable key depth

Hex L-Keys [mm]

- Blade dimension
- Blade dimension
- Hex bolster
- Total length
- Arm length
- Blade length
- Side driver length
- Total length
- Handle width
- Handle diameter
- Total length
- Arm length

Bits [mm]

- Blade diameter
- Bit length
- Threaded bit
- Bit holder length
- Total length
- Flute length
- Screw size
- Bit holding socket length
- Socket length

Measurement tools [mm]

- Scale width
- Colour
- Measure capacity [mm]
- Measure capacity [inch]
- Segment quantity
- Max. length, assembled
- Flat nozzle width
- Threaded connector
- Battery
- LED lumen
- Laser-Light

Pliers [mm]

- Flat jaws
- Half round jaws
- Round jaws
- Cutter without bevel
- Cutter with small bevel
- Cutter with bevel
- Anvil cutter
- Center cutter
- Scissors cutter
- Stripper
- Pliers length [mm]
- Pliers length [inch]
- Soft wire
- Medium hard wire
- Hard wire
- Piano wire
- Max. diameter
- Max. cross-section
- Max. gripper pipe diameter
- Max. gripper width across flats
- Retaining ring, external
- Retaining ring, internal
- Clamping range
- Opening width, flat
- Cutting performance
- With opening
- American Wire Gauge

Soft-face hammer [mm]

- Face diameter
- Face width
- Hammer head width
- Total length

General Symbols

- Weight, g
- Packaging unit

Legend

Ranges

- Case strength
- Wheel-along case
- Case shape
- Case suitable for transport by air

Screwdrivers

- MagicRing
- MagicSpring
- Ball end can swivel up to 25°
- SLIM TECHNOLOGY

Torque

- Torque safety check
- Precision: ±6%
- Saves time

Allgemein

- Recommended for electricians
- Recommended for electricians – non-insulated
- VDE Testing and Certification Institute
- CE marking
- ESD electronics mark

L-keys

- MagicRing
- MagicSpring
- Ball end can swivel up to 25°
- TORX Ball end can swivel up to 25°
- DynamicJoint
- OptiGrip
- MagicTips
- BiCut Power

Bits

- Suitable for impact screwdrivers
- Lifespan 120 times longer
- Visible in UV light
- SLIM TECHNOLOGY

Pliers

- Cutting-to-length diameter
- Skinning diameter length
- Automatic skinning

Impact tools

- Optimum weight distribution
- Soft hammer end
- Levers out nail clamp

Measurement tool

- Fully enclosed
- Visible from just 10°

Notes